



Fangorn Forest™

The ominous and sinister Fangorn Forest is home to the Ents. It is one of the oldest forests of Middle-earth, and the trees are massive and ancient. Fangorn is dense and claustrophobic, and is marked by a perimeter of thick roots, gnarled trees and thorny undergrowth that surrounds it like a fortified wall.



When the Uruk-hai that captured Merry and Pippin were attacked by Riders of Rohan, it seemed that the two Hobbits would be trampled to death in the confusion. However, they managed to drag themselves to the borders of the forest, where they were inadvertently rescued by Treebeard.

In this Modelling Workshop you will learn how to make small forest sections that can be placed together to represent Fangorn Forest. The basic construction of the trees is similar to that described in Pack 8. However, the advanced techniques and extra details presented here will really add to the atmosphere of your woods. You will need all the same materials that you used for the trees in Pack 8, as well as some offcuts of styrene from the rocky outcrops in Pack 16.

◀ WALL OF TREES

The ancient forest of Fangorn is a dark and forbidding place.

YOU WILL NEED

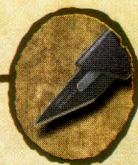
GARDEN WIRE
 MASKING TAPE
 LICHEN, SISAL MOSS, SPONGE
 OR COARSE TURF
 LARGE PAINTBRUSH
 BROWN AND GREEN
 ACRYLIC PAINT
 FLOCK OR STATIC GRASS
 CLIPPERS OR WIRE CUTTERS
 PVA GLUE
 PLASTER FILLER

STYRENE OFFCUTS
 JUNIOR HACKSAW
 SCISSORS
 COARSE SANDPAPER
 GREEN PAN SCOURER,
 BRUSH BRISTLES AND
 SMALL TWIGS

► COARSE TURF

This material is made specifically for model foliage, but can be hard to get hold of.





Making Your Forest Section

1 The Styrene Base

Take a small offcut block of styrene and mark it out into a rough oblong. The exact dimensions aren't important. We used a piece that was approximately 14cm/6" long and 5cm/2" wide, because it was conveniently left over from Pack 16's rocky outcrop. Cut the styrene so that the ends are rounded and then shape the sides with a junior hacksaw exactly as you did for the hill in Pack 4 and the outcrops in Pack 16.

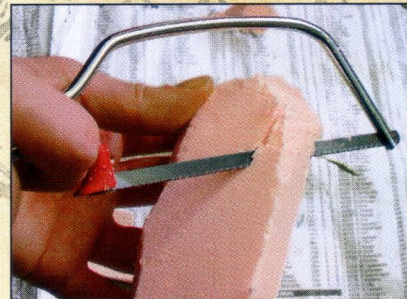


◀ THE STYRENE OFFCUT

An oblong block of styrene will be ideal for the base.

▶ SHAPING THE SIDES

Angle the sides into a slope with a junior hacksaw.



Next, using a sheet of coarse sandpaper, smooth down the slopes of your base. Be sure to do this over plenty of newspaper and in a well-ventilated area, as lots of dust will be created when you sand the styrene.



◀ SMOOTHING THE SLOPES

Use sandpaper to remove the rough edges from the base.

2 Wire Tree Trunks

Using a pair of clippers or wire cutters, snip some pieces of garden wire to use as your tree trunk. We used lengths of about 16cm/7", although yours can be smaller or longer if you wish. In Pack 8, you used three to five lengths of wire to make a single tree trunk. For the thick, gnarled trees of Fangorn, however, you will need between five and eight pieces. Twist them together, leaving plenty of room at the top and bottom to spread out the roots and branches. Because you are using more pieces of wire, you will find that you can make some of the branches and roots thicker. Up to three strands per branch or root is a suitable number. Finally, take the branches that are made of more than one strand of wire and separate the strands to make individual offshoots.

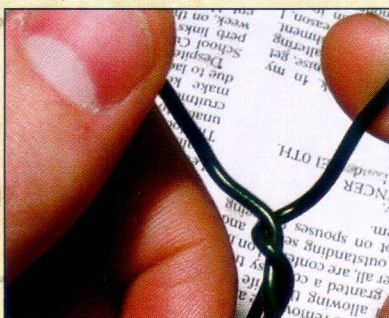


▲ TWISTING THE TRUNK

Twist several strands of garden wire to make a thick tree trunk.

▶ MAKING SMALLER BRANCHES

Separate the strands of wire at the ends of the branches to make smaller 'offshoots'.



▲ COMPLETED FRAMEWORK

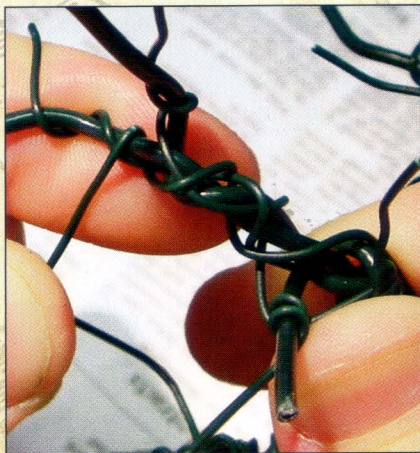
Notice how the roots are longer than the ones in Pack 8.



Alternative Approaches

Creating Smaller Branches

Real trees have a very intricate network of fine branches, but this can be quite tricky to represent on a small model tree! One way to get a similar effect is to use thinner wire to add even more branches to each of your main stems. Garden wire comes in several thicknesses, or 'grades', and the thinnest of these is ideal to make realistic, small branches. Simply twist as many pieces of fine grade wire around your trees as you like, fanning out the ends into thin branches as you go, before moving on to Step 3.



► **REALISTIC BRANCHES**
Fine grade garden wire is ideal for making thinner branches.

3 Covering the Wire

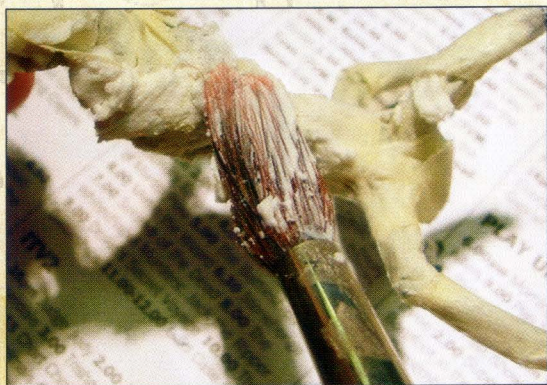
Cover the whole tree with small strips of masking tape, just as you did in Pack 8's Modelling Workshop. Make sure that none of the wire is visible through the tape.



▲ **COVERING THE GAPS**
Masking tape is a cheap and effective way to cover the bare wire.

4 Texturing the Trees

Use a large paintbrush to apply a coat of thinned-down plaster filler all over the trees. This makes a great texture that will resemble tree bark, and is essential to replicate the gnarled, aged look of the trees in Fangorn Forest. Leave the filler to dry completely before painting the model.



▲ **APPLYING PLASTER FILLER**
Texture the trunks to make them look like real trees.



► **NATURAL TEXTURE**
Your tree is textured and ready to be painted.



5 Painting Your Model

With a large brush, give the whole tree a coat of brown paint. The styrene base can be painted green.

Use PVA glue to attach the tree to the styrene base. If some of the roots are sticking out at an angle, it only adds to the effect. Leave the whole thing to dry thoroughly before continuing. If there is room on the base, why not make another tree, perhaps of a different size, and position it alongside the first. Once the glue has dried, you can cover the base with PVA glue and stick flock or static grass to it in the usual way.

NB. Although PVA takes a lot longer to dry than superglue, it is the only way to stick the tree to the styrene. Superglue causes a chemical reaction that will melt the styrene!

‘Trees that could whisper, talk to each other, even move!’

MERRY™



▲ ATTACHING THE TREE

Bend the roots around the base to get a snug fit.

► FINISHING THE BASE

Paint the base green and add flock to finish it.



6 Adding the Foliage

Just as in Pack 8's Modelling Workshop, you can use sisal moss, lichen or sponge to make the foliage. However, this time we chose to use purpose-made foliage clusters, known as 'coarse turf', available from most good hobby stores. This is a very attractive, spongy material, but it is quite hard to find and expensive when compared to lichen, sponge or sisal moss. However, it provides hard-wearing and much more dense-looking foliage.

Working on one branch at a time, use PVA glue to stick a piece of your chosen material to the tree. Don't worry about the glue being messy, as it will dry transparent. Spread out the foliage and position your material where you want it before leaving it to dry. You might need to work the clusters a little by pulling lumps off with your fingers, as this makes them look more irregular and natural.

You can add more foliage to the tree if you wish to fill in all the gaps, or you can leave it quite sparse to get a 'spookier', bare effect.



◀ APPLYING THE GLUE

A blob of PVA will be sufficient to stick the foliage to the branches.

► ATTACHING THE FOLIAGE

Add as much or as little foliage to your tree as you like.





◀ **ROUGH TERRAIN**
Green pan scourer makes effective areas of rough scrub.



▶ **FALLEN TREES**
Real twigs, glued down horizontally, represent long-dead trees.



◀ **LONG GRASSES**
Use brush bristles to make even more undergrowth.

7 Adding Extra Details

The edge of Fangorn is almost a wall of undergrowth and trees, and therefore your model will benefit from lots of extra details. The techniques required for these details can be found in Pack 9's Modelling Workshop.

First, use a pair of scissors to cut up pieces of green pan scourer. Stick them onto small sections of the base with PVA glue. To enhance the impression of thick undergrowth, you can even add some of your foliage material to resemble bushes.

Next, use small bits of twig to represent old, fallen trees – one or two will be plenty. Glue them down with PVA. Long grasses made from coarse brush bristles will look very effective when stuck down next to the fallen trees.

8 The Finished Model

Once the glue has dried, the forest base will be finished. However, to effectively make the edge of Fangorn Forest, you will probably need more than one. Make as many as you like, in different sizes and shapes, for use in this Pack's Battle Game.

*'This forest is old.
Very old. Full of
memories... and anger.'*

LEGOLAS



▶ **FANGORN FOREST**
Your finished forest section, ready for use in your Battle Games.