



<http://www.canon.com/c-park/en/>



View of completed model

Traditional *gasshozukuri* architecture, Japan

The traditional *gasshozukuri* architecture is an architectural style still practiced in Japan in locations like Shirakawa-go in Gifu Prefecture and Gokayama in Toyama Prefecture. This type of construction, seen exclusively in regions that see heavy snowfall, features a steeply pitched roof to prevent snow buildup. Smoke from the sunken hearth at the center of family life rises up along the roof, warming the rooms on all floors.

*This model was designed for Papercraft and may differ from the original in some respects.

■ Parts list(pattern):Eleven US letter sheets(No.1 to No.11)

■ No. of Parts:49

*Build the model by carefully reading the Assembly Instructions, in the parts sheet page order.



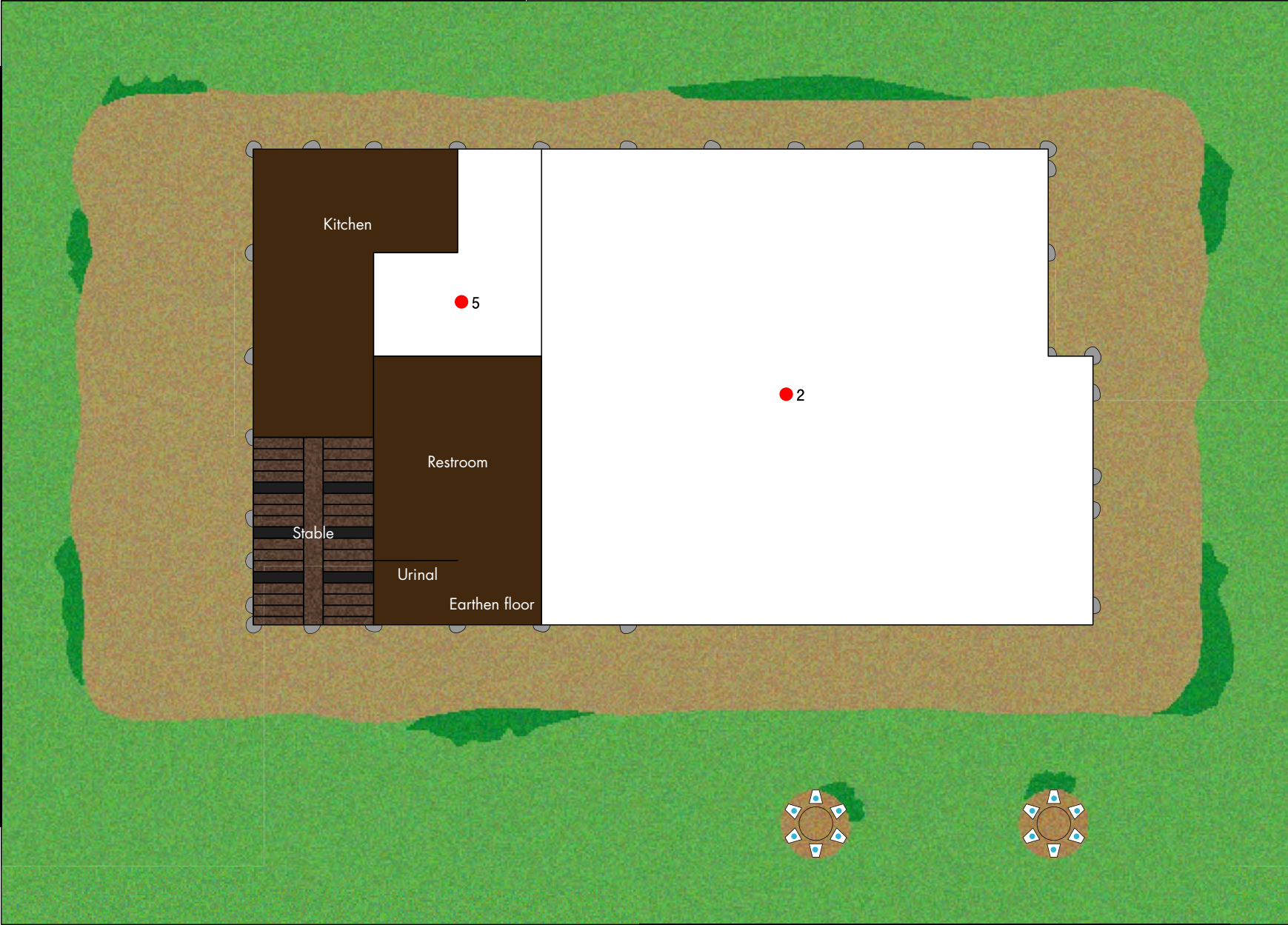
Shows the structure of a traditional *gasshozukuri* architecture

Remove the roof and exterior walls to see the layout of the attics and other rooms.



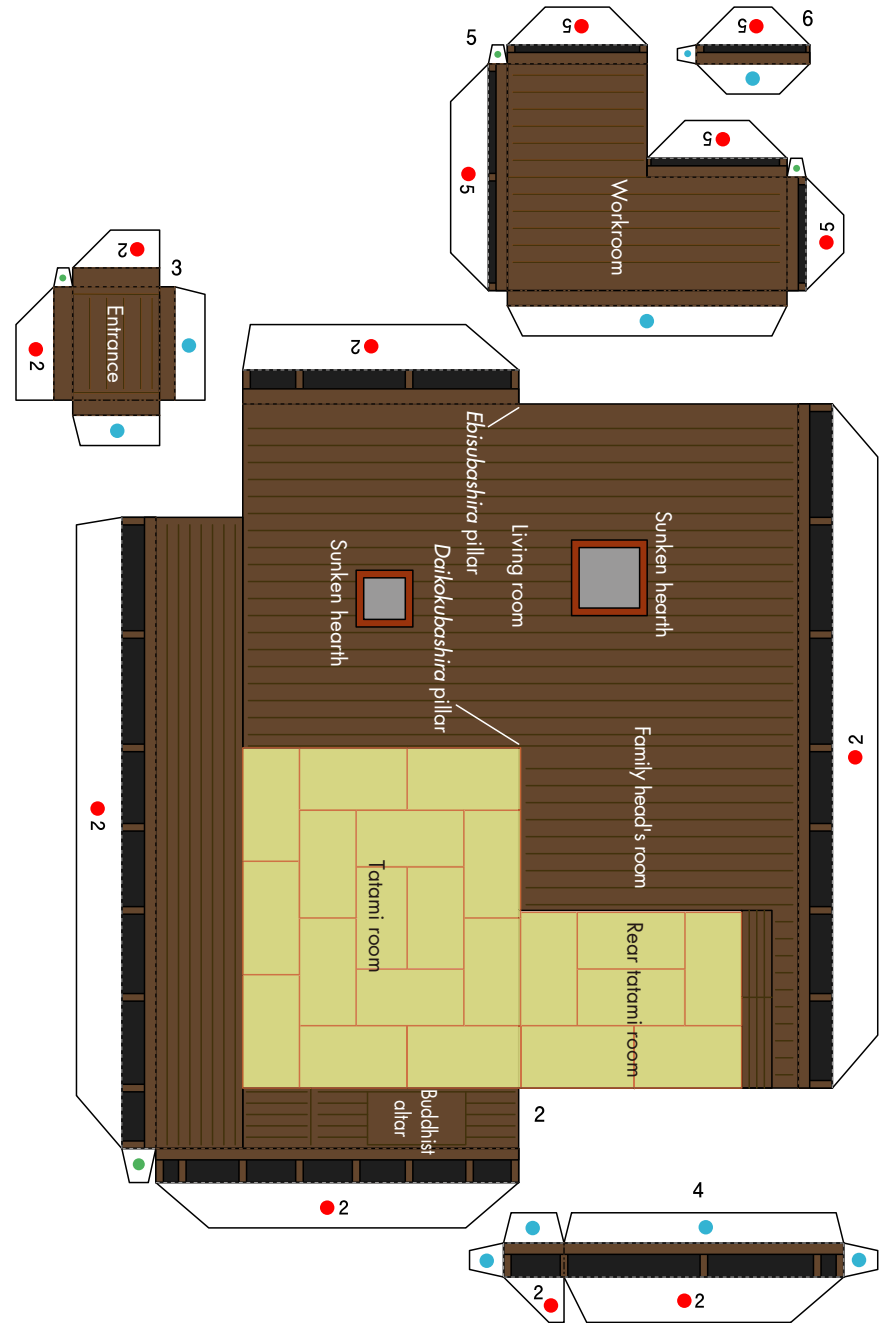
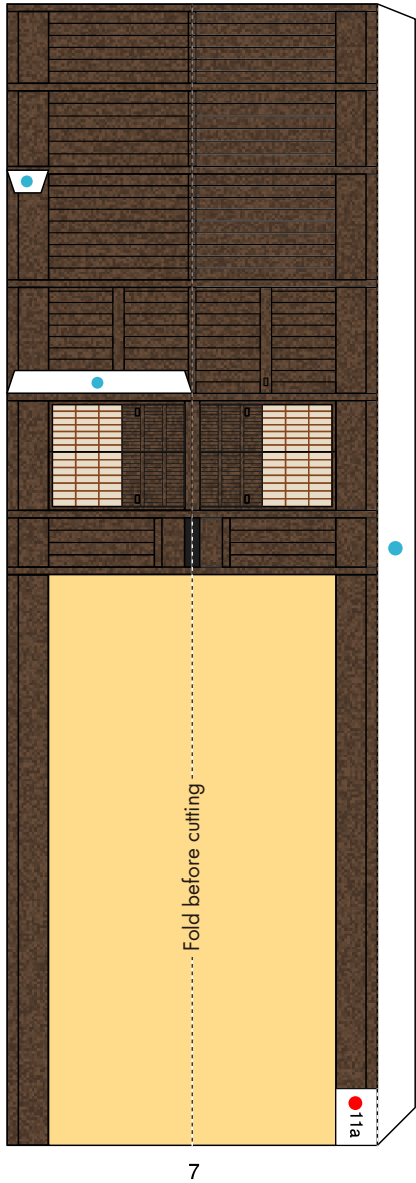
Traditional *gashozukuri* architecture, Japan: Pattern

Canon ® is a registered trademark of Canon Inc. © Canon Inc. © Hiroshi Chiba/PAPERART-C



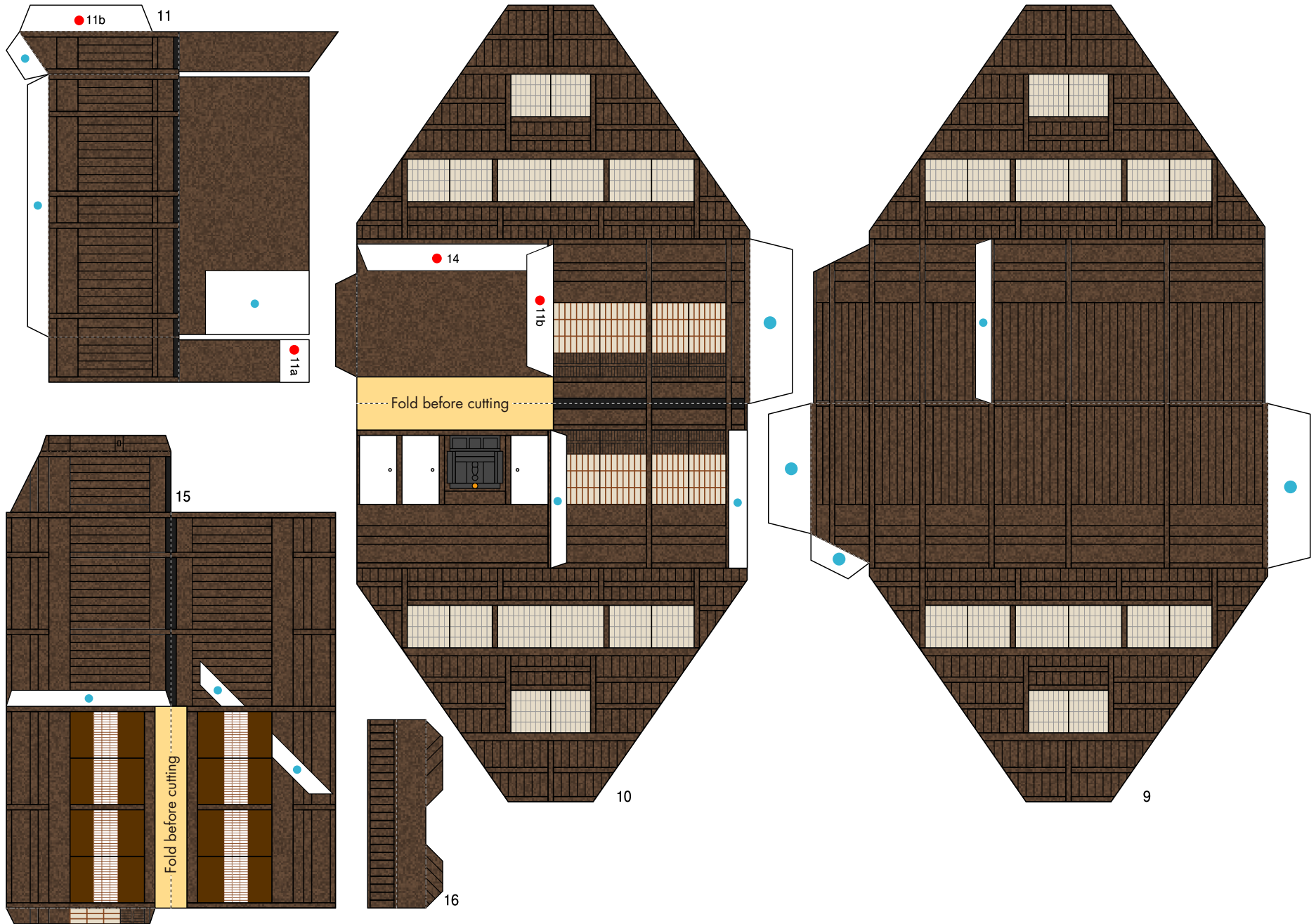
Traditional *gasshozukuri* architecture, Japan: Pattern

Canon® is a registered trademark of Canon Inc. © Canon Inc. © Hiroshi Chiba/PAPERART-C



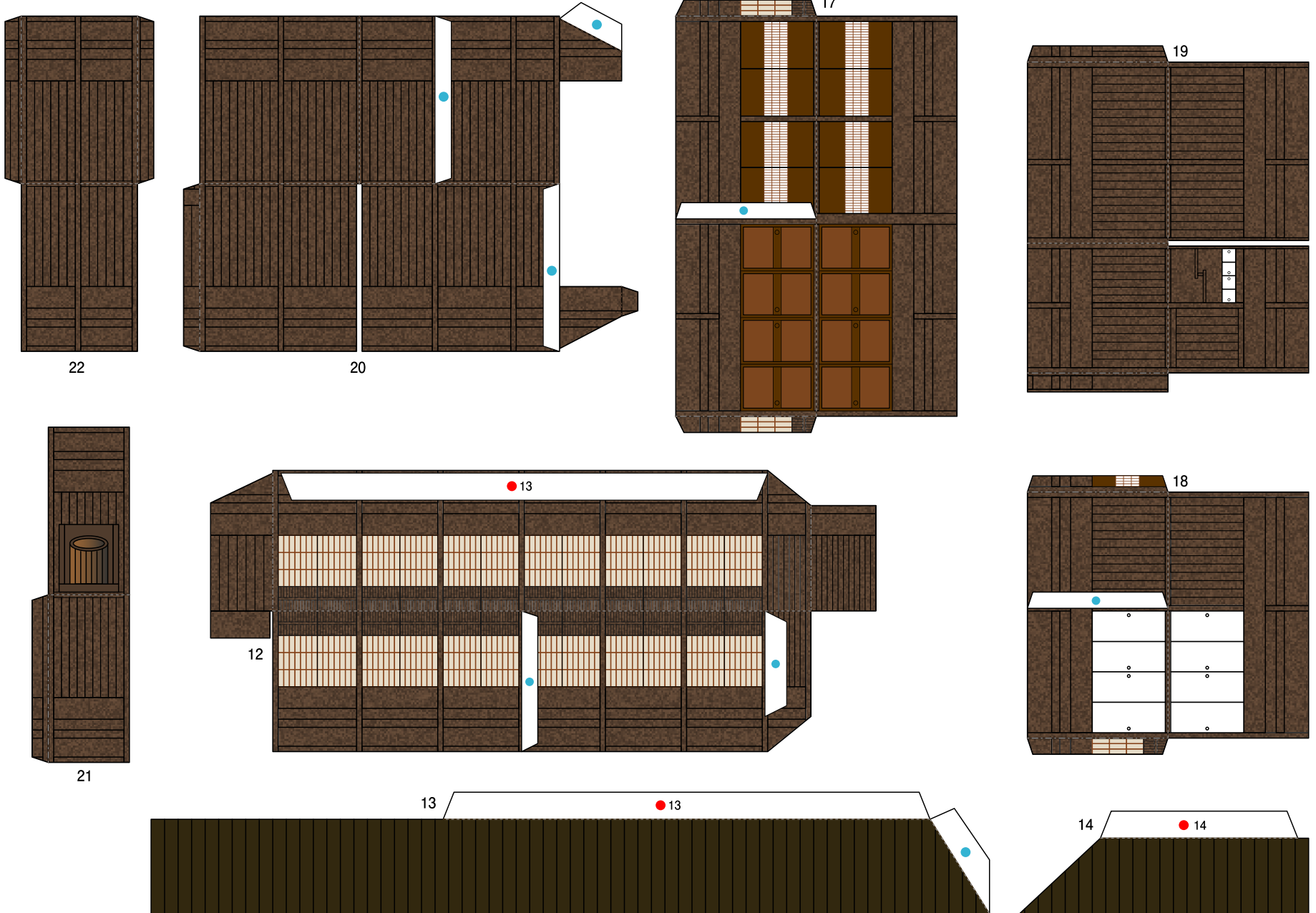
Traditional *gasshozukuri* architecture, Japan: Pattern

Canon® is a registered trademark of Canon Inc. © Canon Inc. © Hiroshi Chiba/PAPERART-C



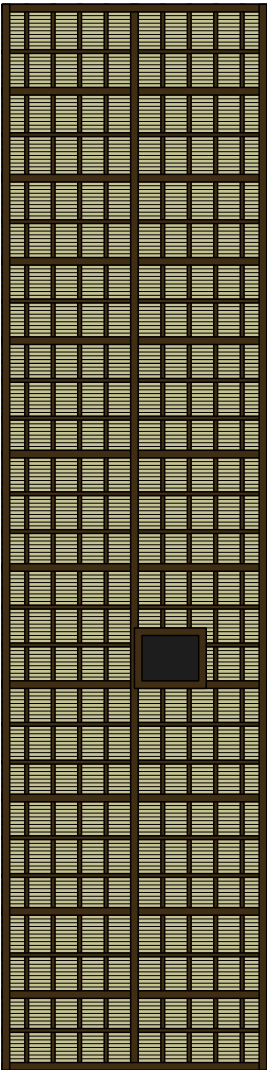
Traditional *gasshozukuri* architecture, Japan: Pattern

Canon® is a registered trademark of Canon Inc. © Canon Inc. © Hiroshi Chiba/PAPERART-C

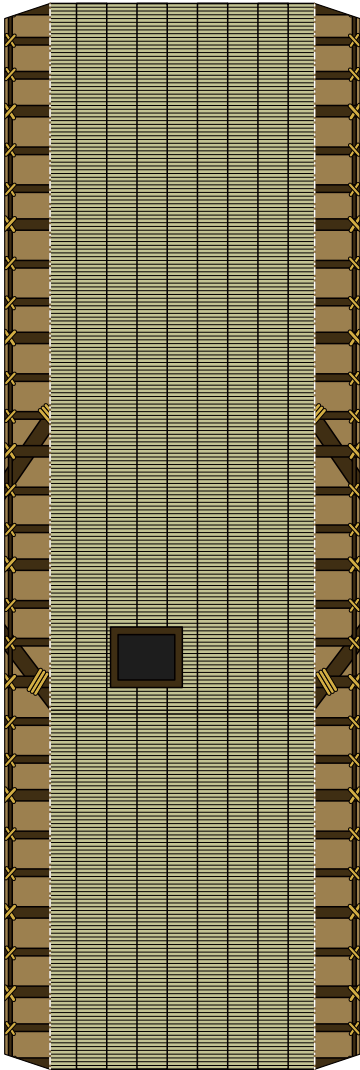


Traditional *gashozukuri* architecture, Japan: Pattern

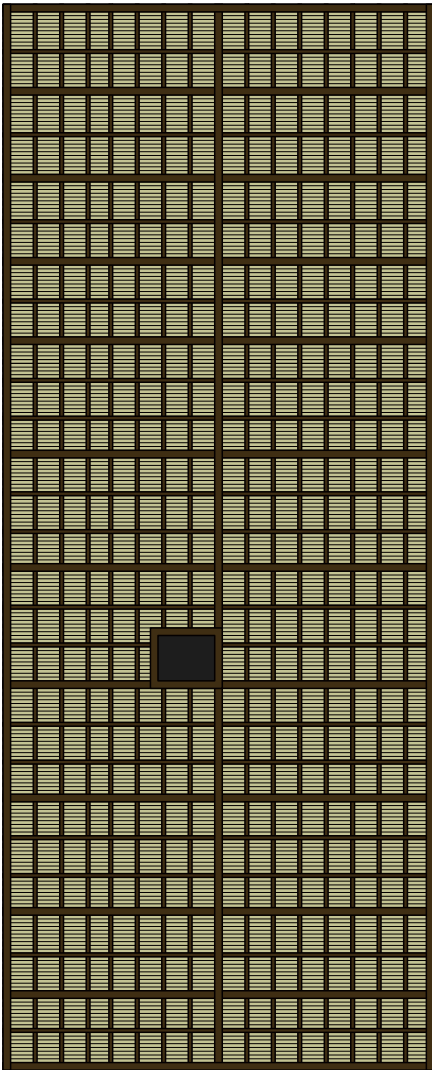
Canon® is a registered trademark of Canon Inc. © Canon Inc. © Hiroshi Chiba/PAPERART-C



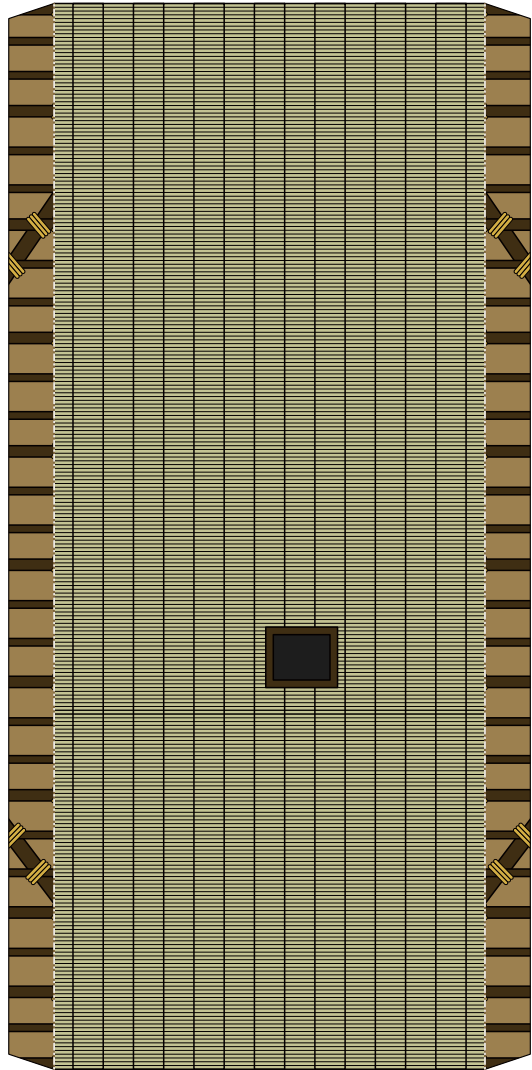
23



24



25



26