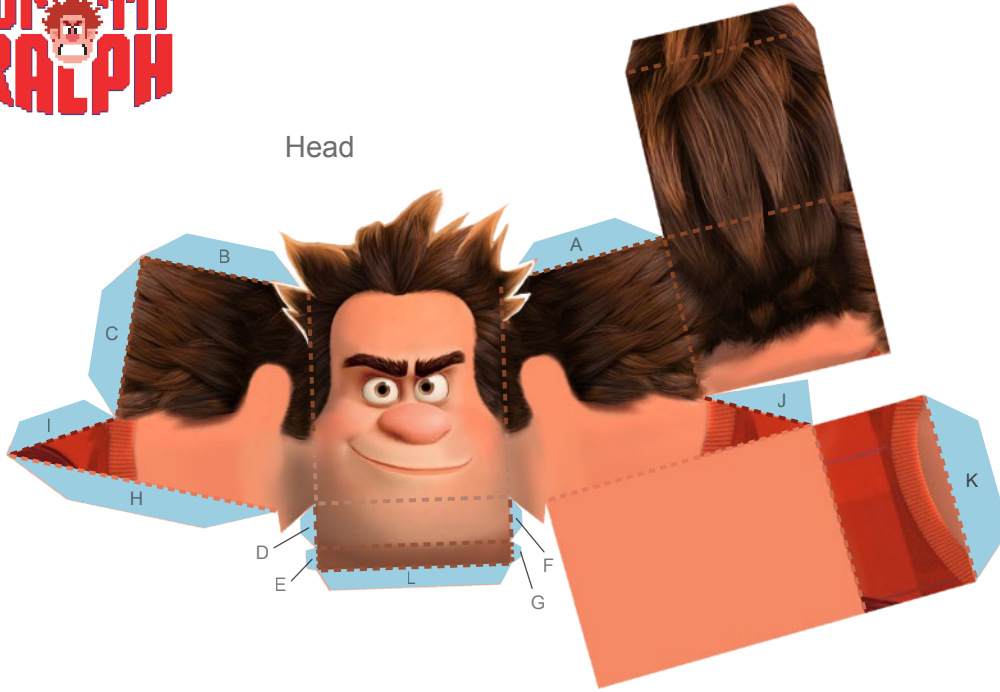




# Wreck-It Ralph 3D Papercraft

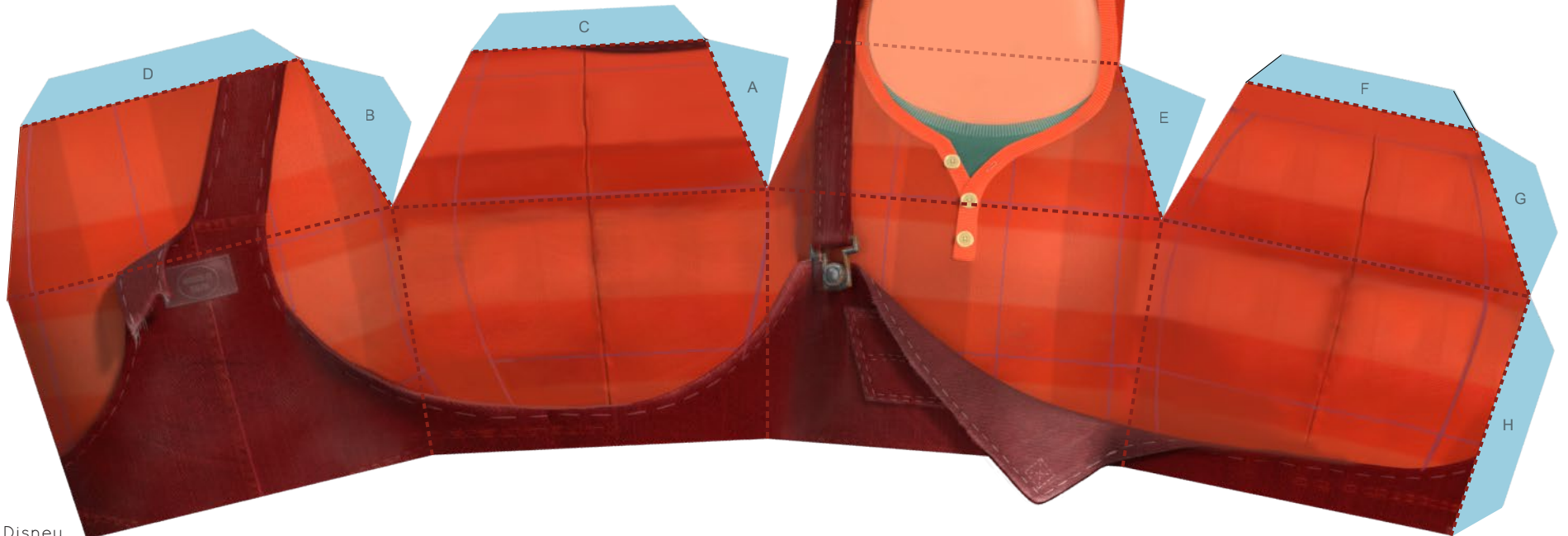
Head



Ears



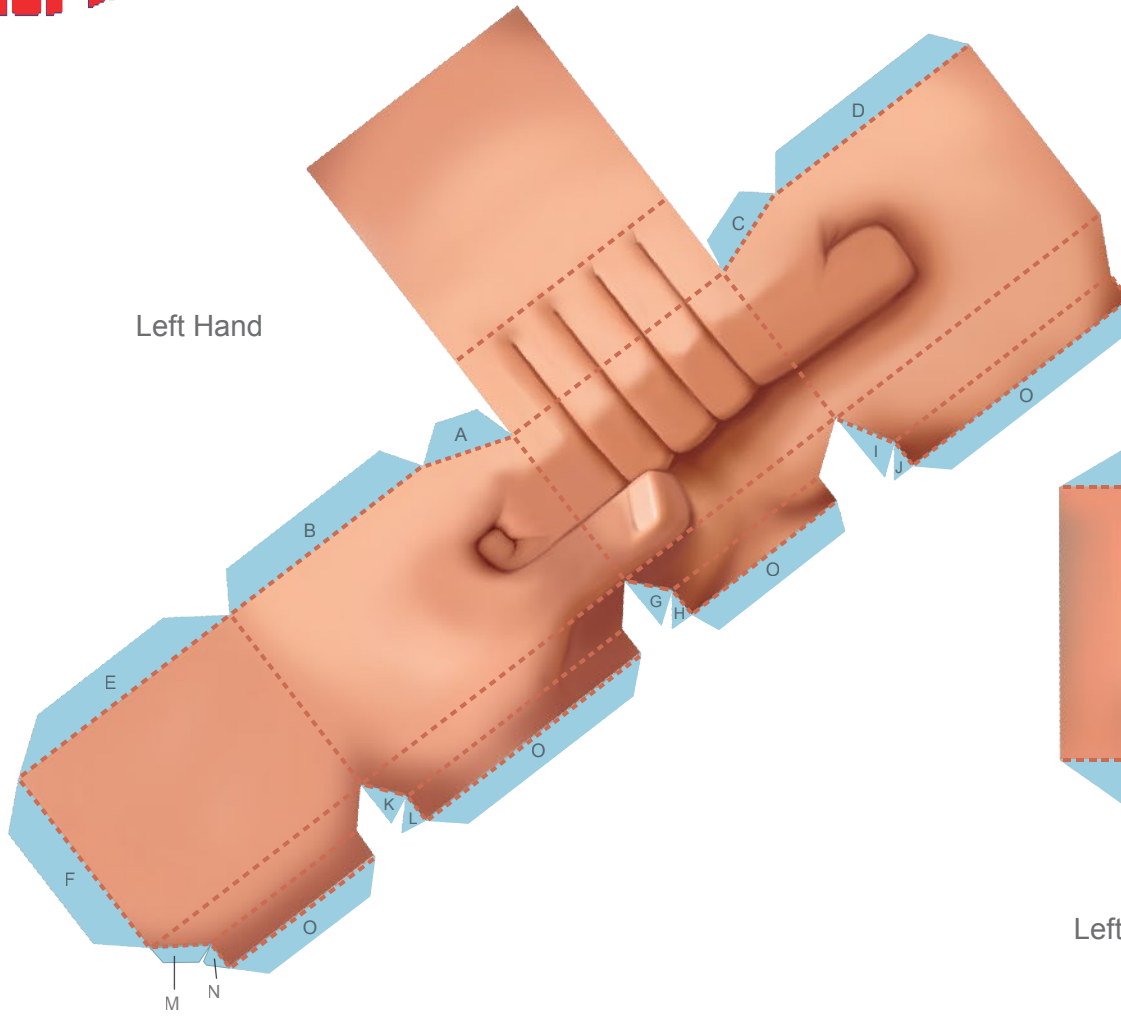
Torso



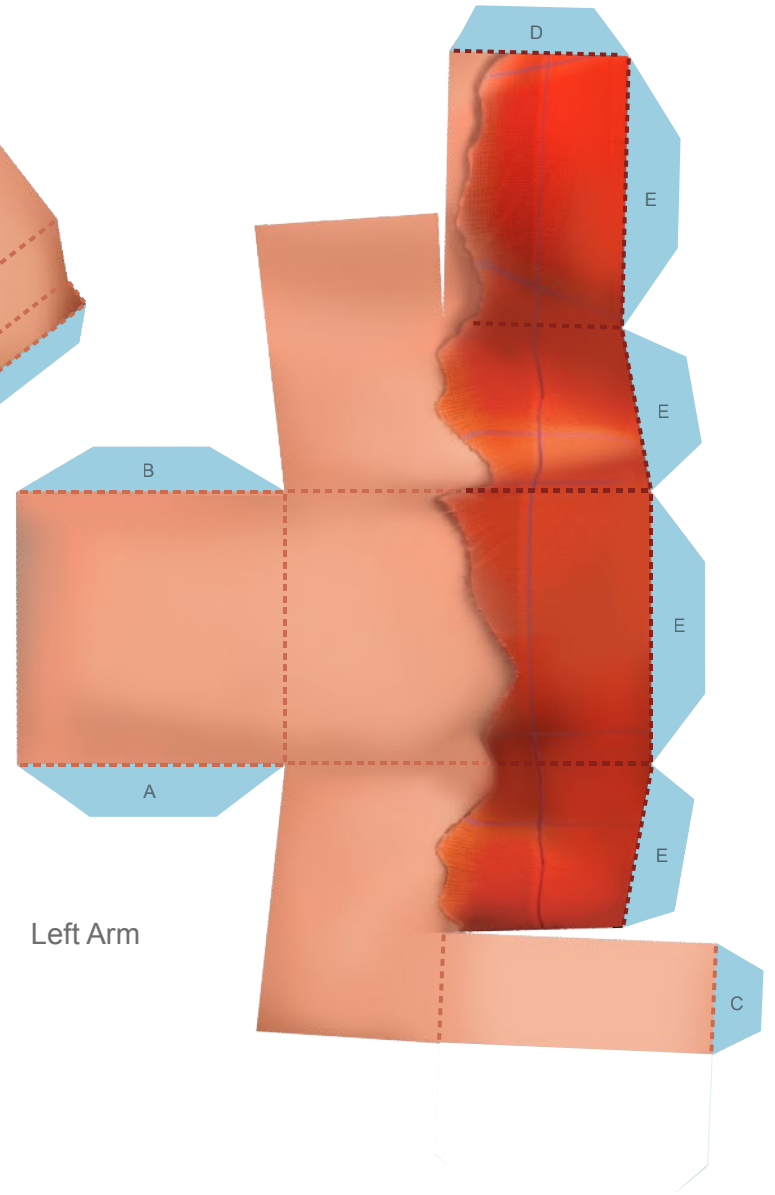


# Wreck-It Ralph 3D Papercraft

Left Hand

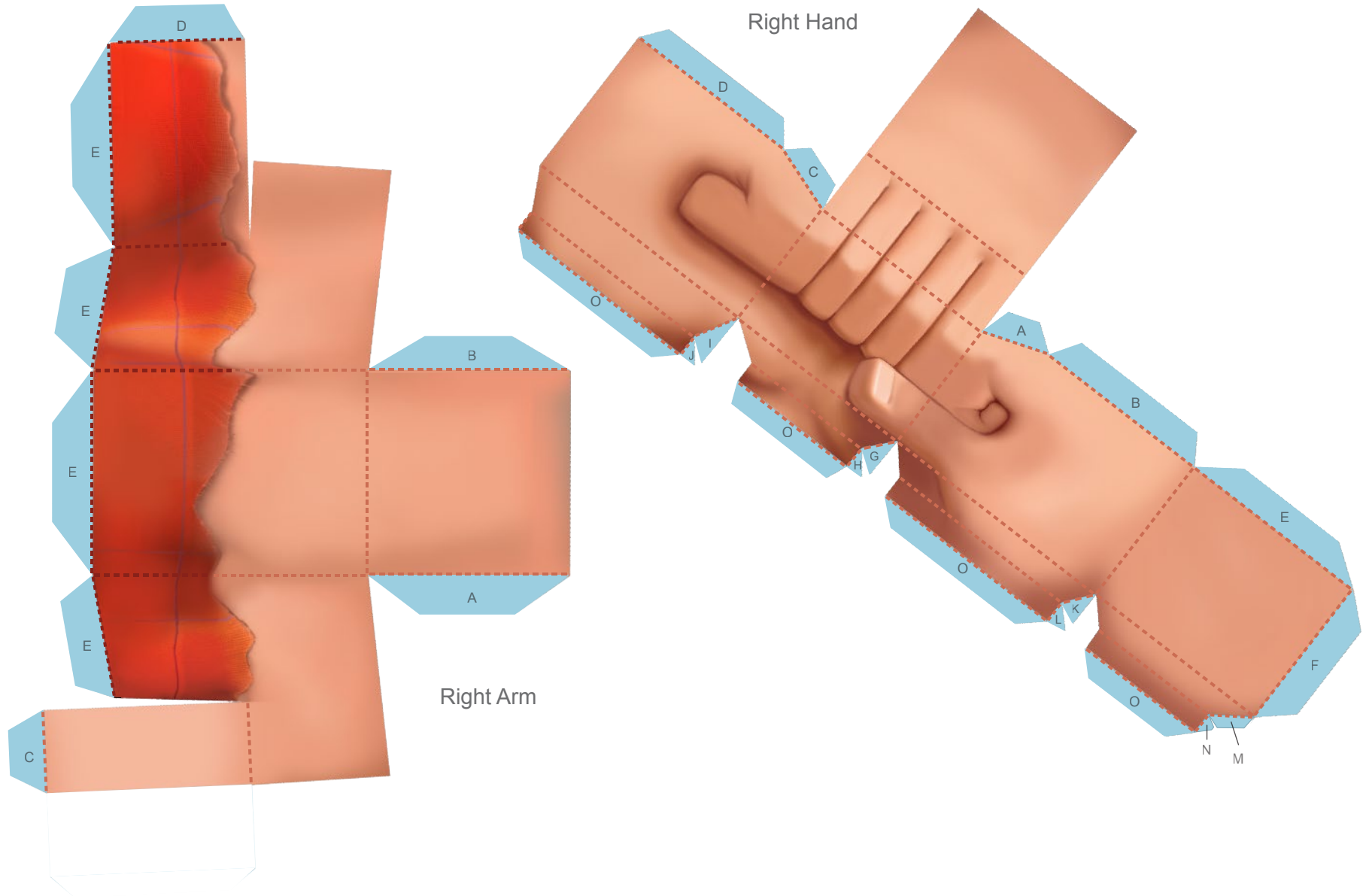


Left Arm





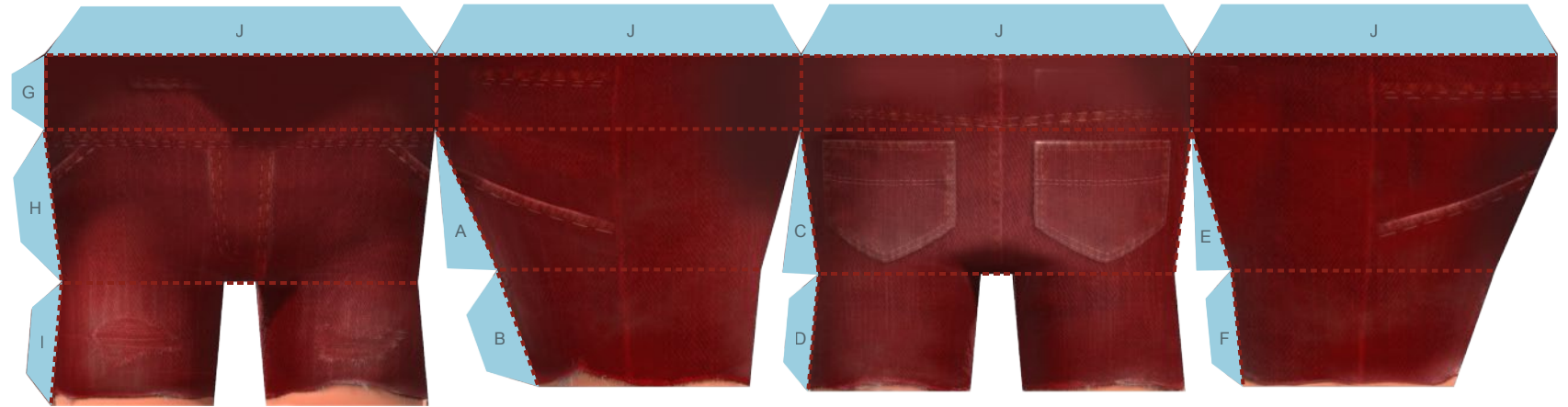
# Wreck-It Ralph 3D Papercraft



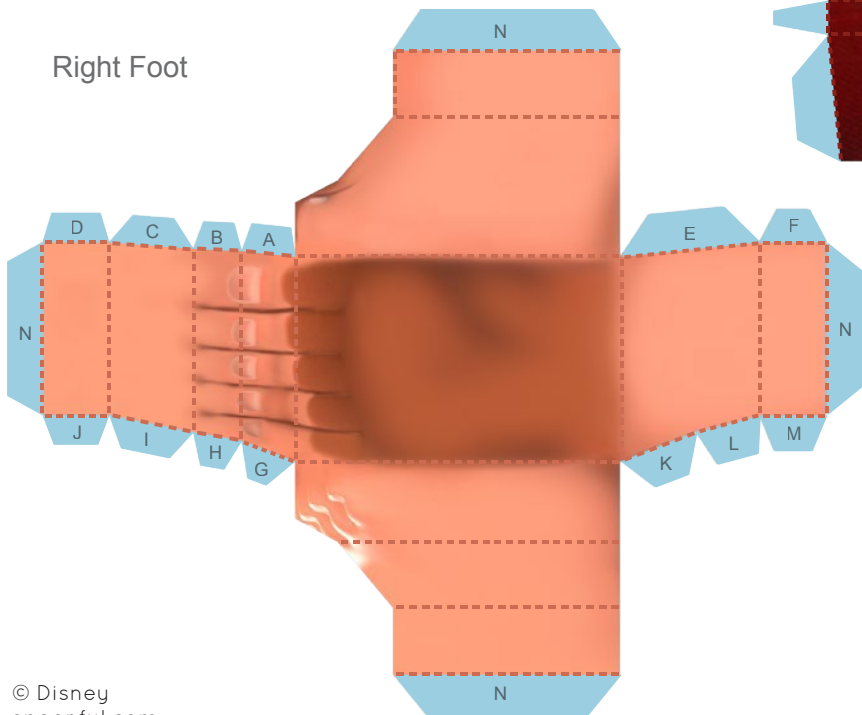


# Wreck-It Ralph 3D Papercraft

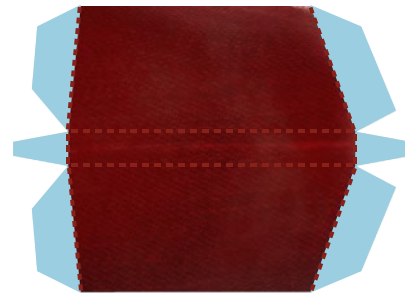
Pants



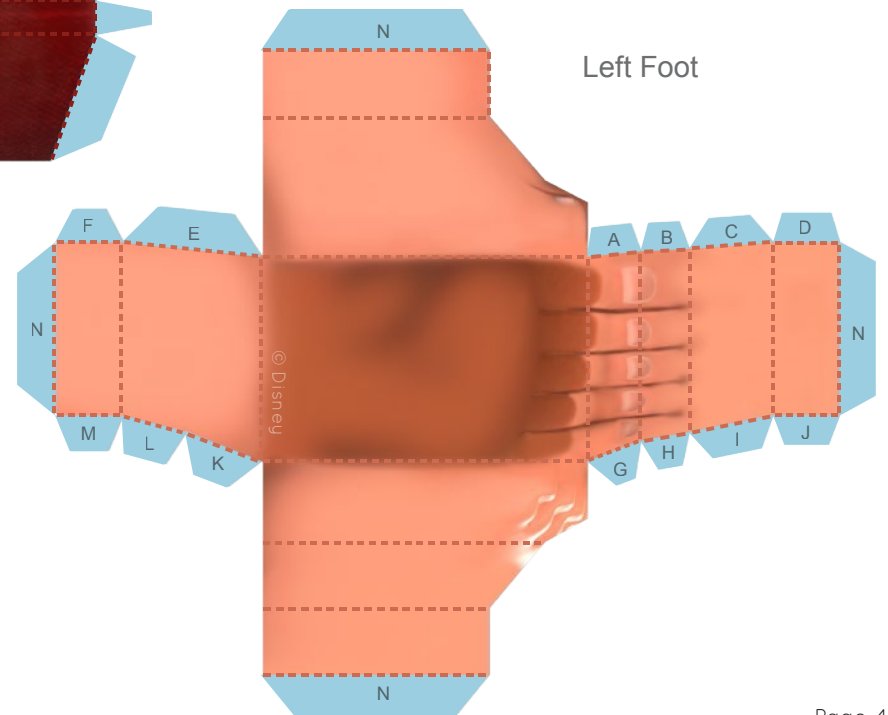
Right Foot



Piece A



Left Foot





## Wreck-It Ralph 3D Papercraft

### Instructions

1. Print the template on regular paper or cardstock and cut out the pieces. Make folds along all dashed lines.
2. Using glue or double-sided tape, secure all tabs on the head to their corresponding panels in alphabetical order. Complete the shape of the head with the L tab.
3. Fold each ear in half along the center dashed line and secure so the design is two-sided. Butterfly the tabs outward and use them to attach the ears to the sides of the head.
4. Secure all tabs on the torso to their corresponding panels in alphabetical order. Complete the shape of the torso with the H tab.
5. Attach the head to the torso.
6. Using glue or double-sided tape, secure tabs A through I on the pants to their corresponding panels in alphabetical order. The J tabs will be used to attach the pants to the torso in step 9.
7. Fold the paper at the vertical dashed lines on Piece A toward you. Fold the blue tabs away from you. Secure the blue tabs to the inseam of the pants.
8. Secure all tabs on each foot in alphabetical order. Use the four remaining N tabs to attach each foot to the inside of the opening at the bottom of the corresponding pant leg.
9. Attach the pants to the torso using the four J tabs on the pants.
10. Secure tabs A through D on each arm in alphabetical order. The E tabs will be used to attach each arm to the torso in step 12.
11. Secure tabs A through N on each hand to their corresponding panels in alphabetical order. Use the four remaining O tabs to attach the hand to the arm.
12. Attach the completed arm to the torso using the four E tabs on the arm.