
ADVANCED PATTERNS

Origamic Architecture Vol. 1



Step by Step Instructions!

ADVANCED PATTERNS

Origamic Architecture Vol. 1

TABLE OF CONTENTS

STATUE OF LIBERTY
PAGE 6

KITTY CAT
PAGE 18

ROYAL KINGDOM
PAGE 8

SAILBOAT
PAGE 20

NEW HOME/ COTTAGE
PAGE 10

HUMMINGBIRD
PAGE 22

BEAR WITH BALLOONS
PAGE 12

LIGHTHOUSE
PAGE 24

ROLLER COASTER
PAGE 14

TRAIN ENGINE
PAGE 26

BIRTHDAY CAKE
PAGE 16

TREE OF LOVE
PAGE 28

Tools you'll need

Graphic knife or scalpel.

I use X-acto blades and knives, but some people prefer scalpels. Make sure the blades are SHARP. Dull blades cause accidents! I also prefer the "grip" handles.

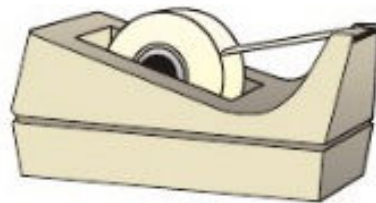


Burnisher or bone folder.

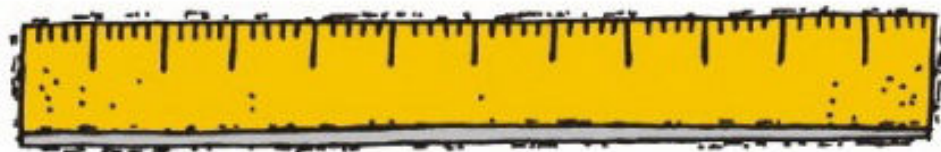
You will need some tool for making the crease scores. Bone folders work nicely (some letter openers work). I use a ball-pointed burnisher for my creases.



Transparent or masking tape.

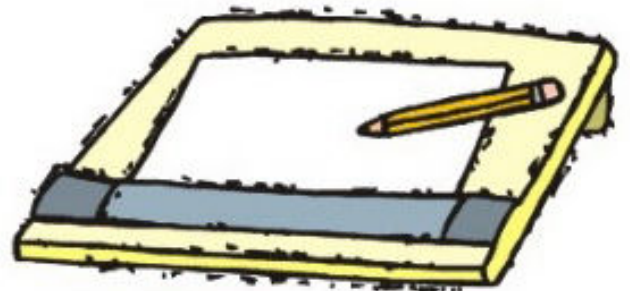


A metal straightedge.



Light table.

A portable light table is all that's necessary. If you don't have one, you can tape your sheets of paper to a window. Be sure to add an extra sheet or two to prevent the glass from getting scratched! I use a lap-style light table with a plexiglass top.

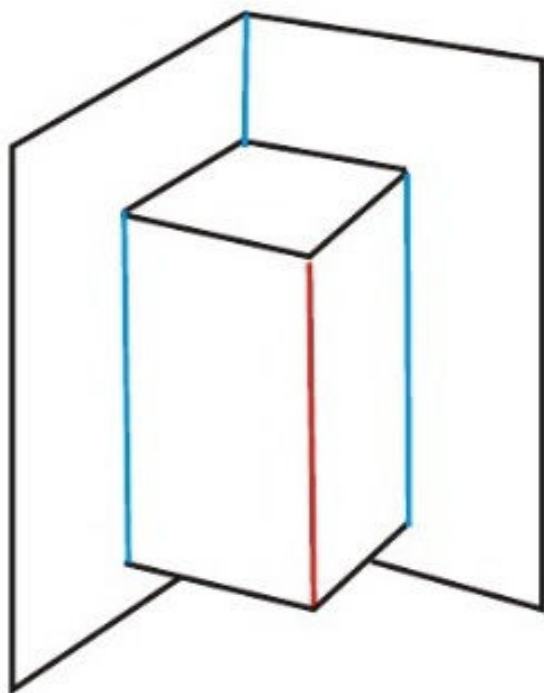


Techniques

Blue lines indicate a
CREASE or VALLEY FOLD.
Use your burnisher/bone folder.

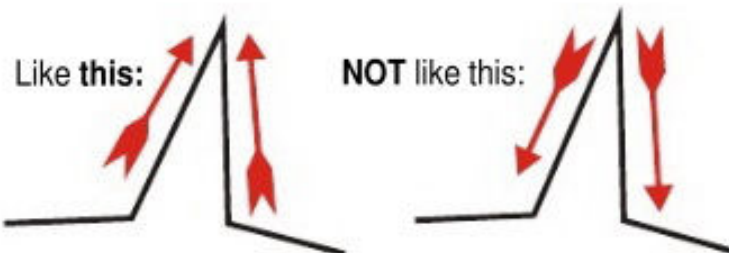
Red lines indicate a
Cut score or MOUNTAIN FOLD.
Cut halfway through the paper.

Black lines indicate a
Full cut through the paper.



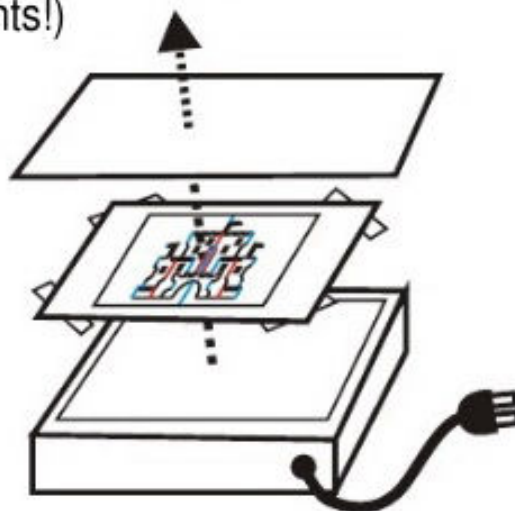
80 lb. Cover or Index
is a good weight to use
and is available at any
office supply store.

When cutting a point, make two
separate cuts, approaching the
sharpest point from both directions.



To get the page ready for cutting:

Go to the page of the design you want.
Click print (current page). Tape the printed
pattern to the back of the blank sheet you
will be cutting/decorating. This is superior
to taping all the sheets to the light table,
as you can now rotate the paper instead
of making you cut with an awkward
arrangement of the hands and arms
(another source of bad cutting and
accidents!)

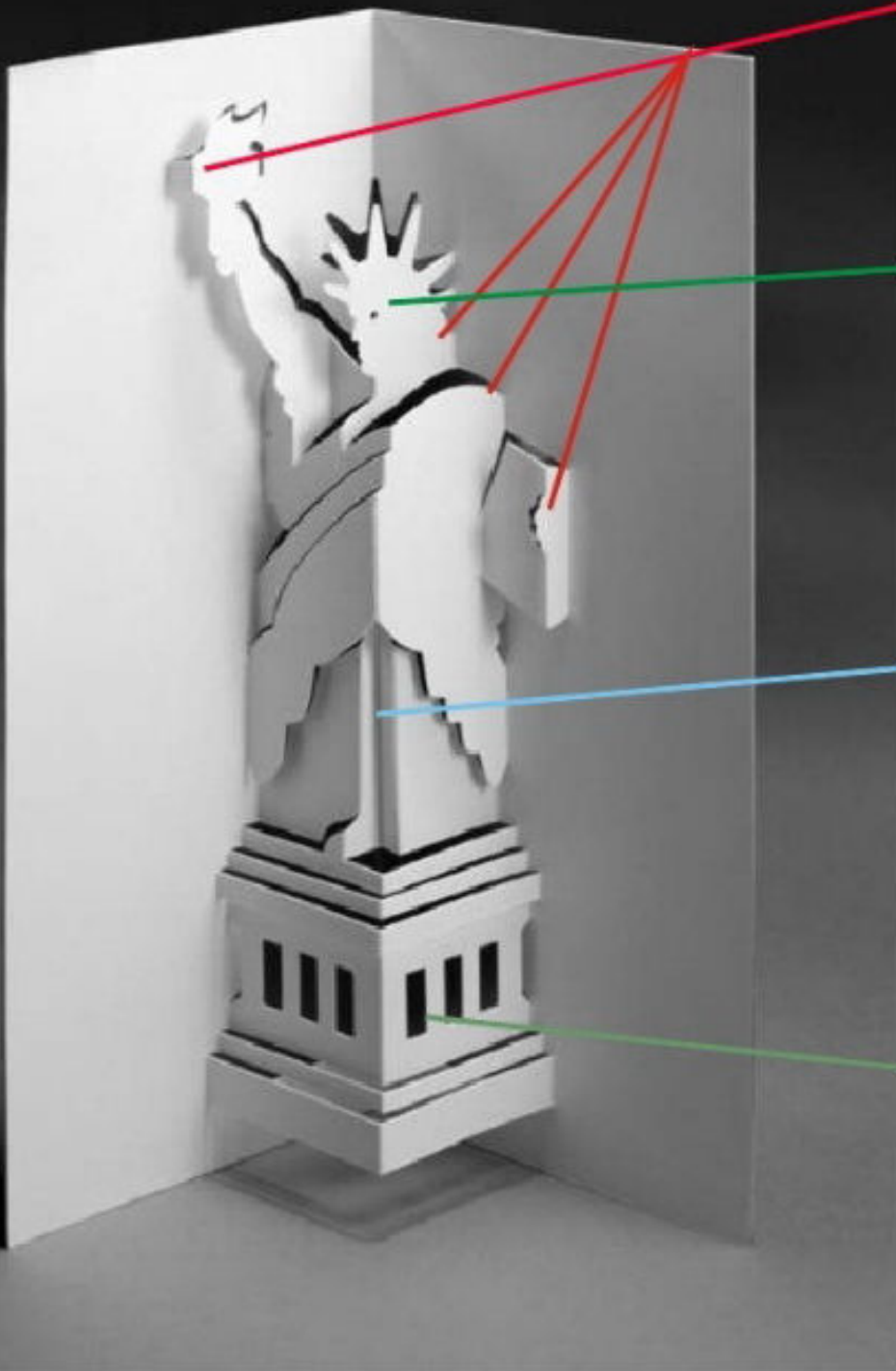


Statue of Liberty

DIFFICULTY
LEVEL



tips&tricks



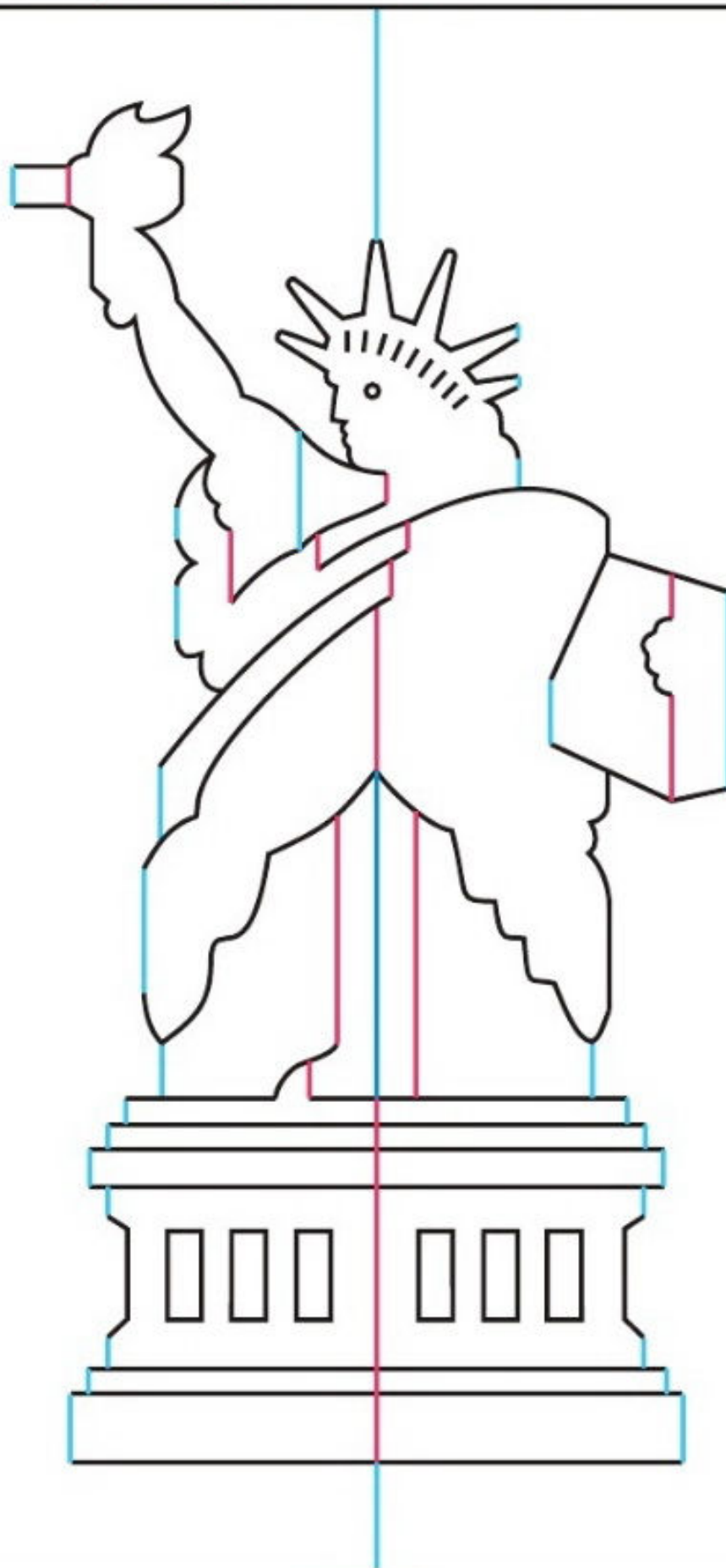
Fold the outside folds first, and nice and crisp!

The eye is a tiny circle. Use a punch or the very tip of an x-acto blade. Be careful!

These close parallels are difficult! Take your time and use tweezers if necessary!

The base must be perfectly parallel! This means the valley fold is at a perfect 90 degrees!

■ RED=cut halfway through ■ BLUE=score ■ BLACK=cut through

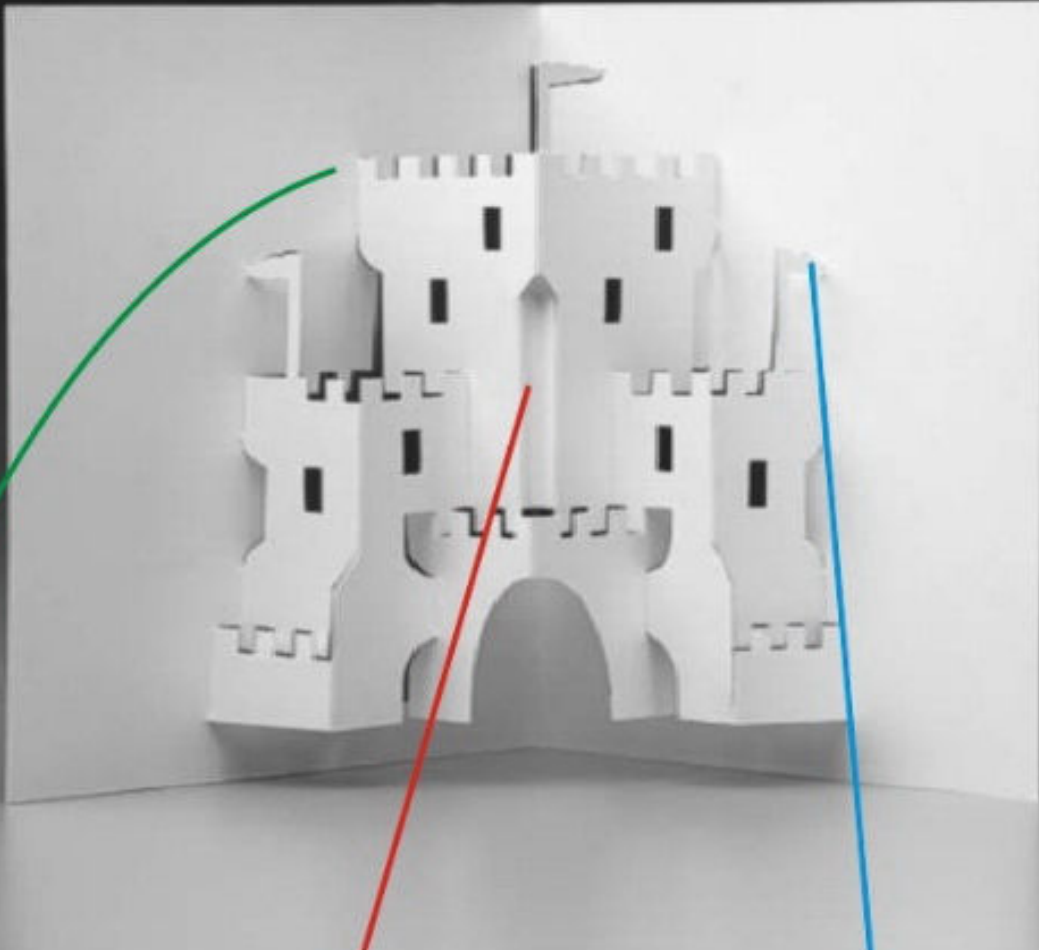


Royal Kingdom

DIFFICULTY
LEVEL



tips&tricks

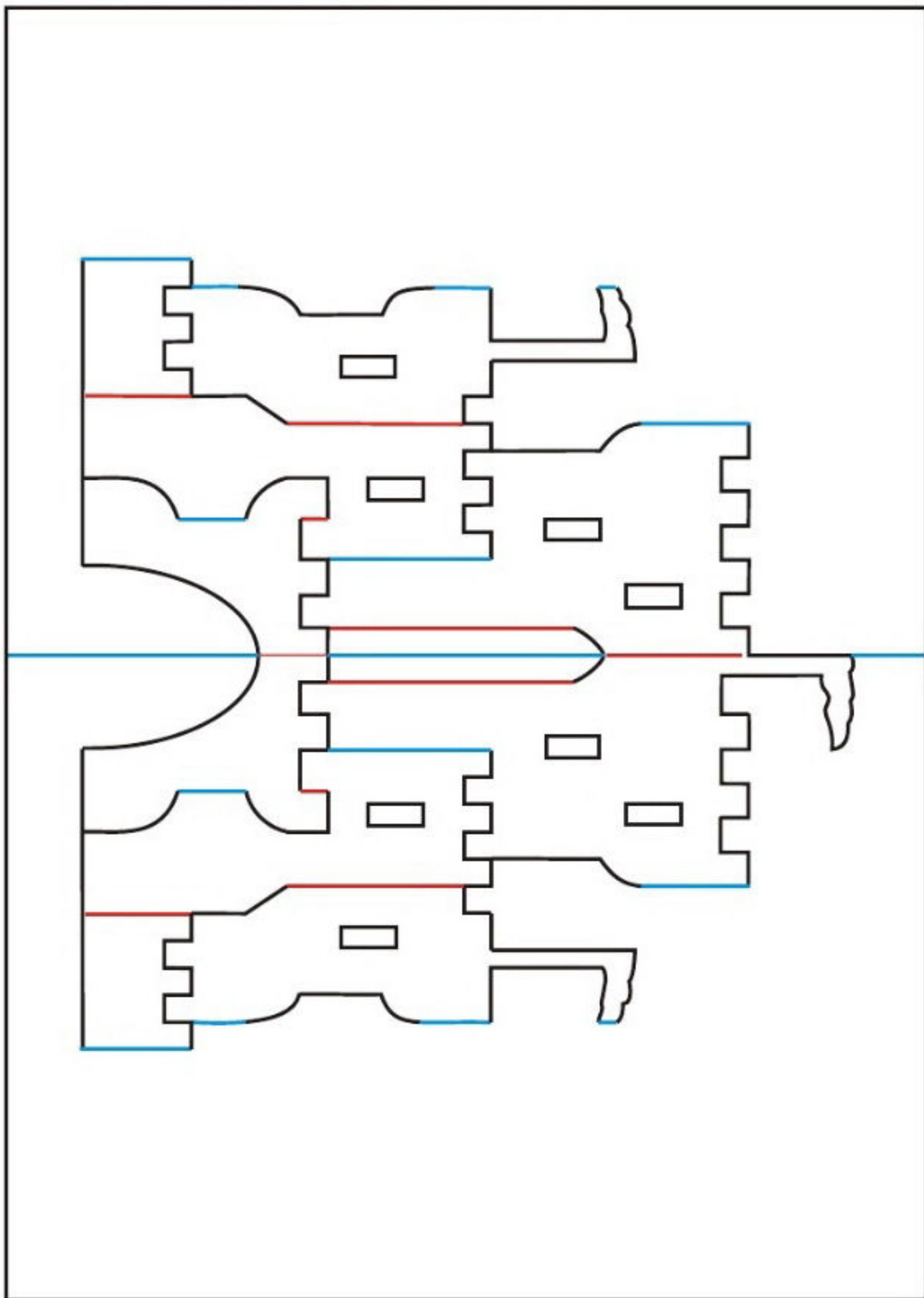


Make top of towers even and crisp.

Use tweezers if necessary to fold these long thin creases.

Flags are a nice detail. Leave enough "beef" to make a solid connection with the backing.

■ RED=cut halfway through ■ BLUE=score ■ BLACK=cut through

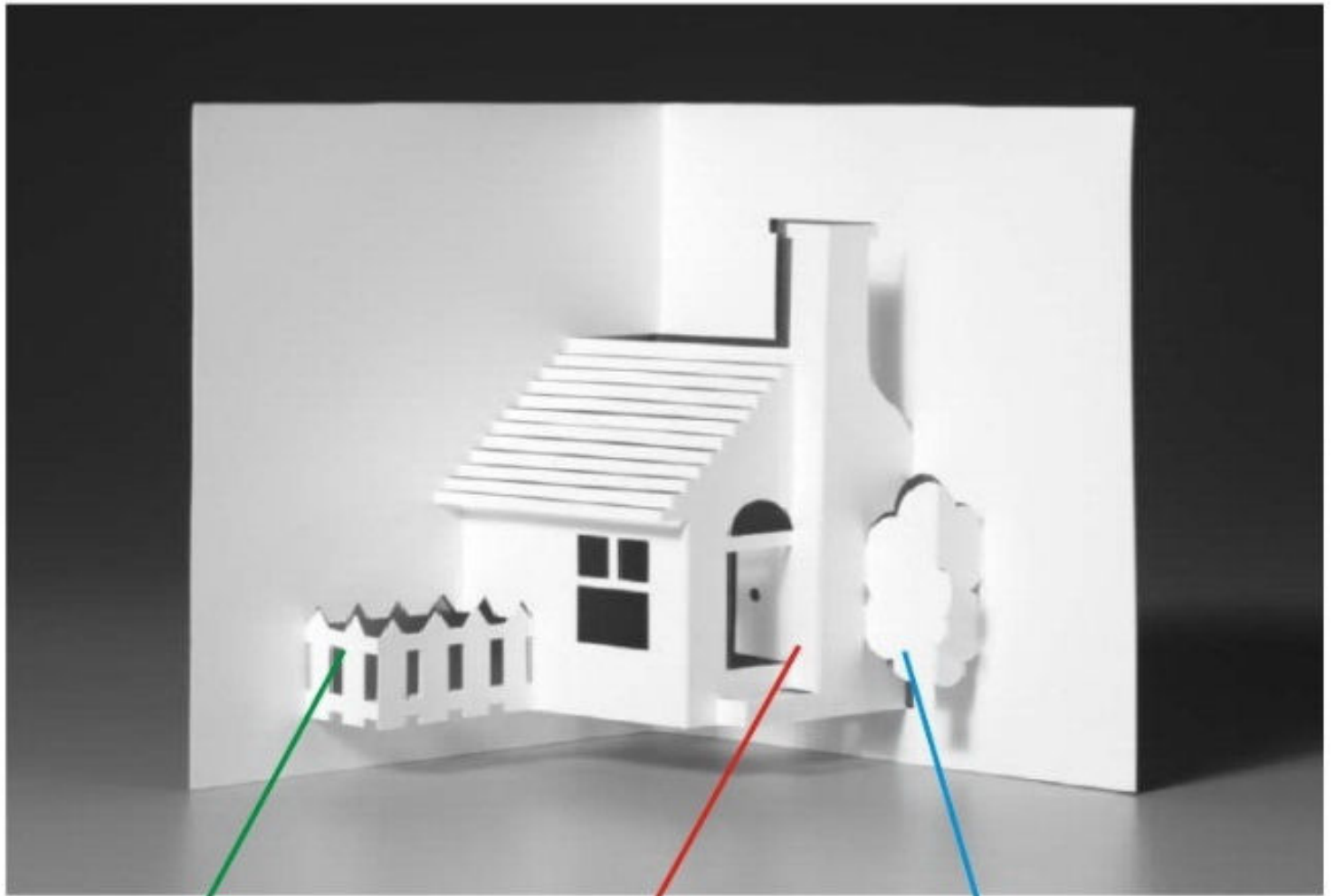


Home Sweet Home

DIFFICULTY
LEVEL



tips&tricks

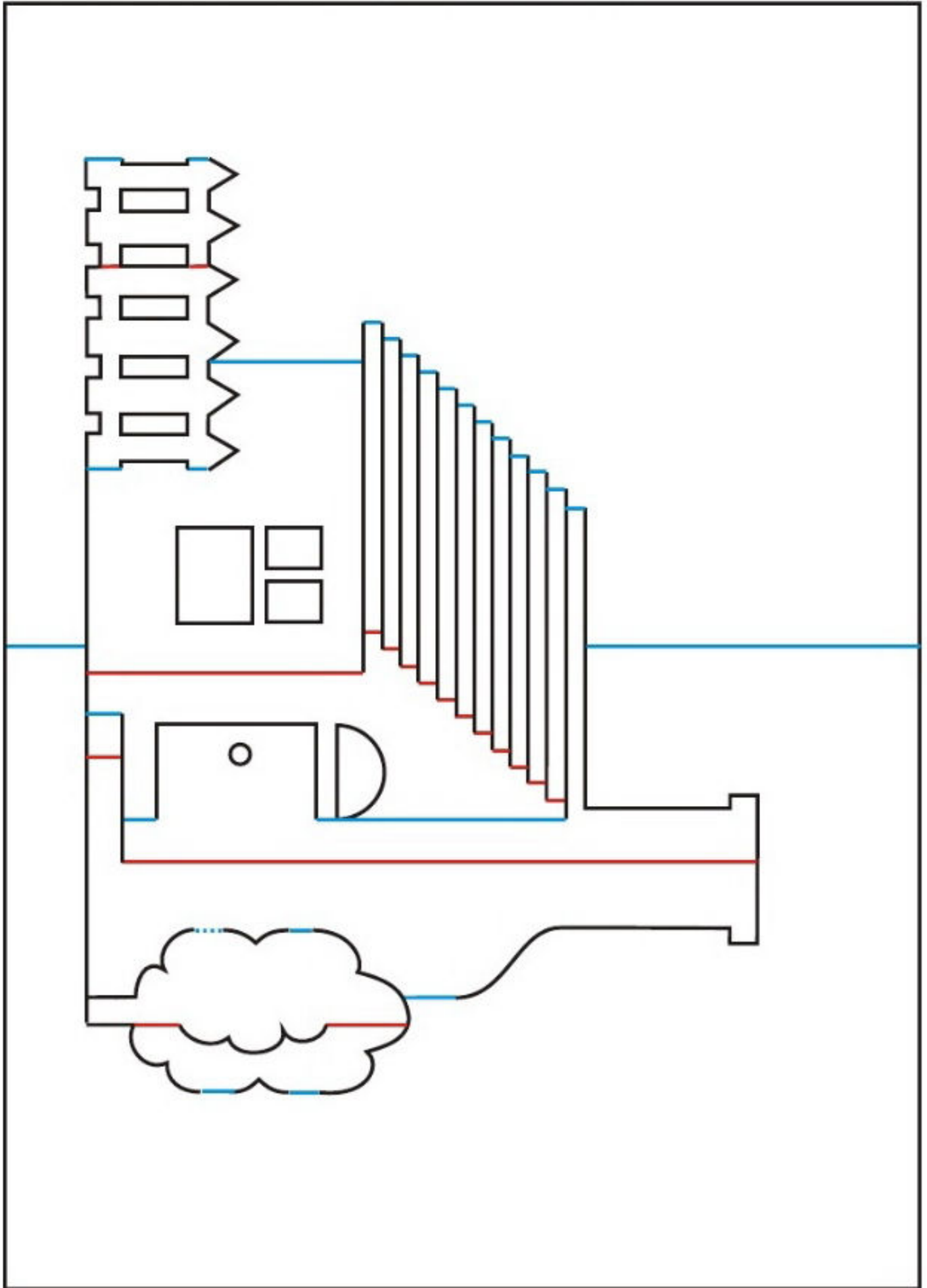


Be careful with the pointed tops of the picket fence.

Fold this long fold early.

The roundness of the shrub contrasts with all the straights of the house.

■ RED=cut halfway through ■ BLUE=score ■ BLACK=cut through

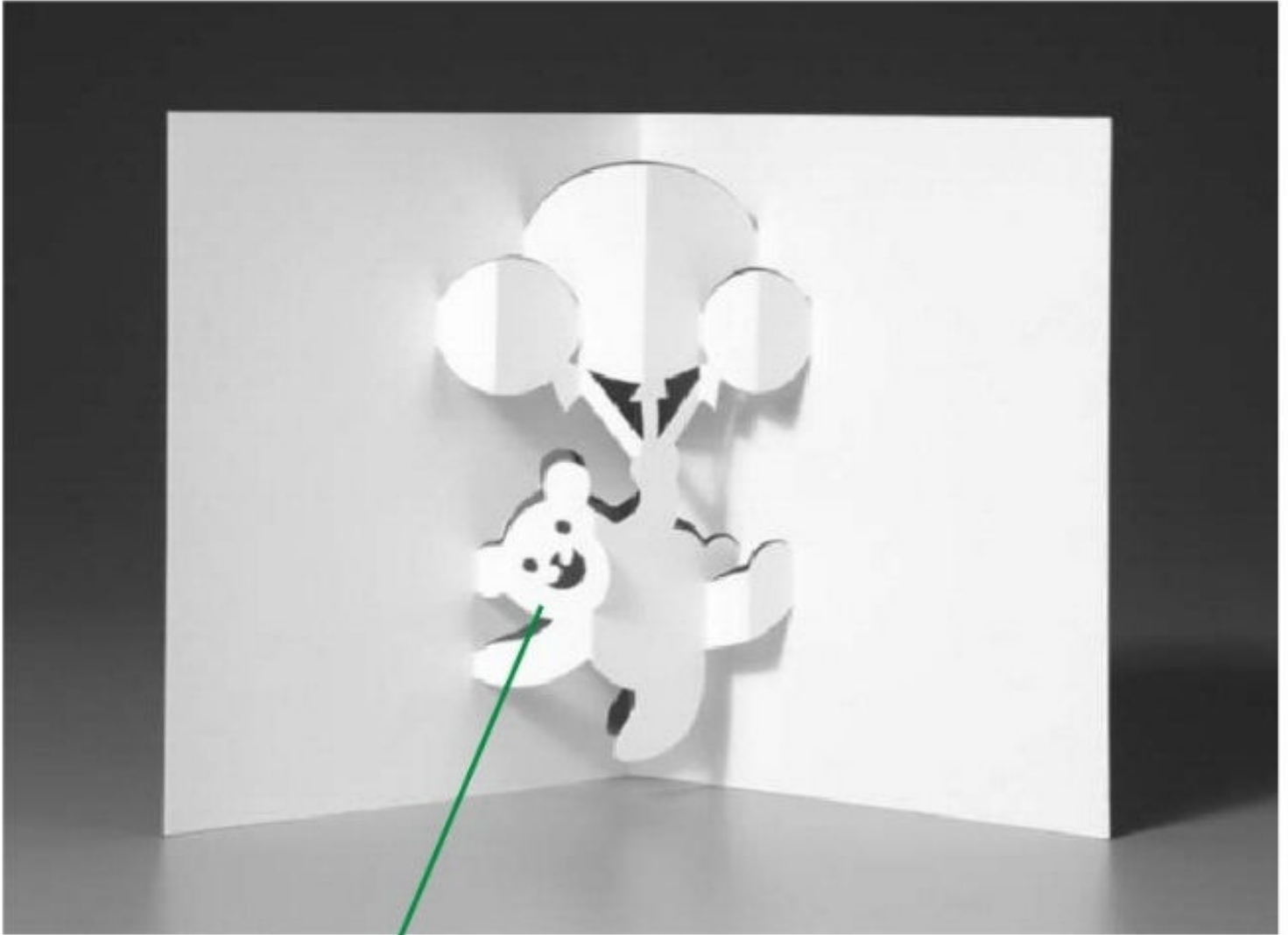


Bear with Balloons

DIFFICULTY
LEVEL

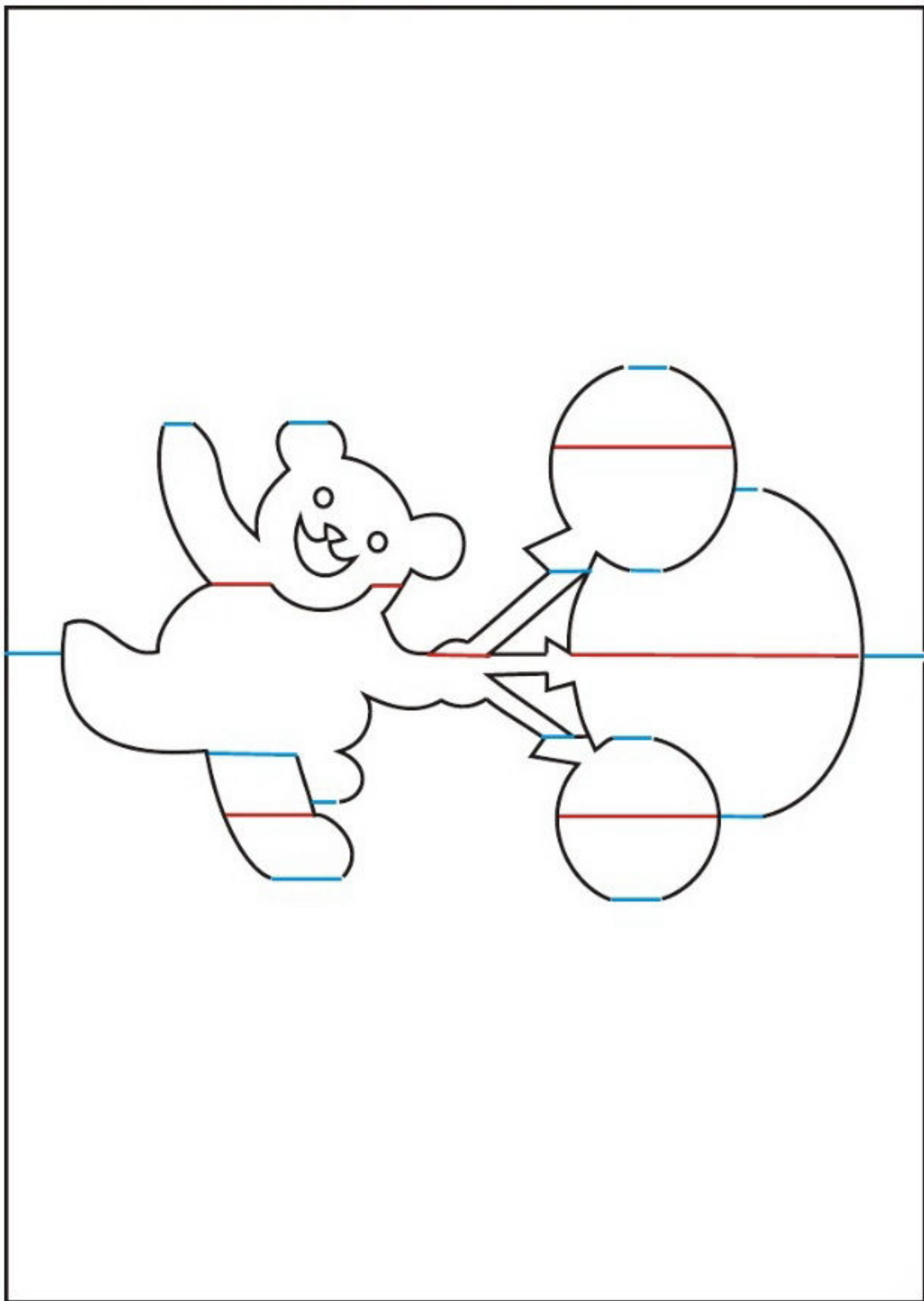


tips&tricks



Be especially careful with the detail in the face. Try and keep the face symmetrical. It is the only difficult part of the design.

■ RED=cut halfway through ■ BLUE=score ■ BLACK=cut through

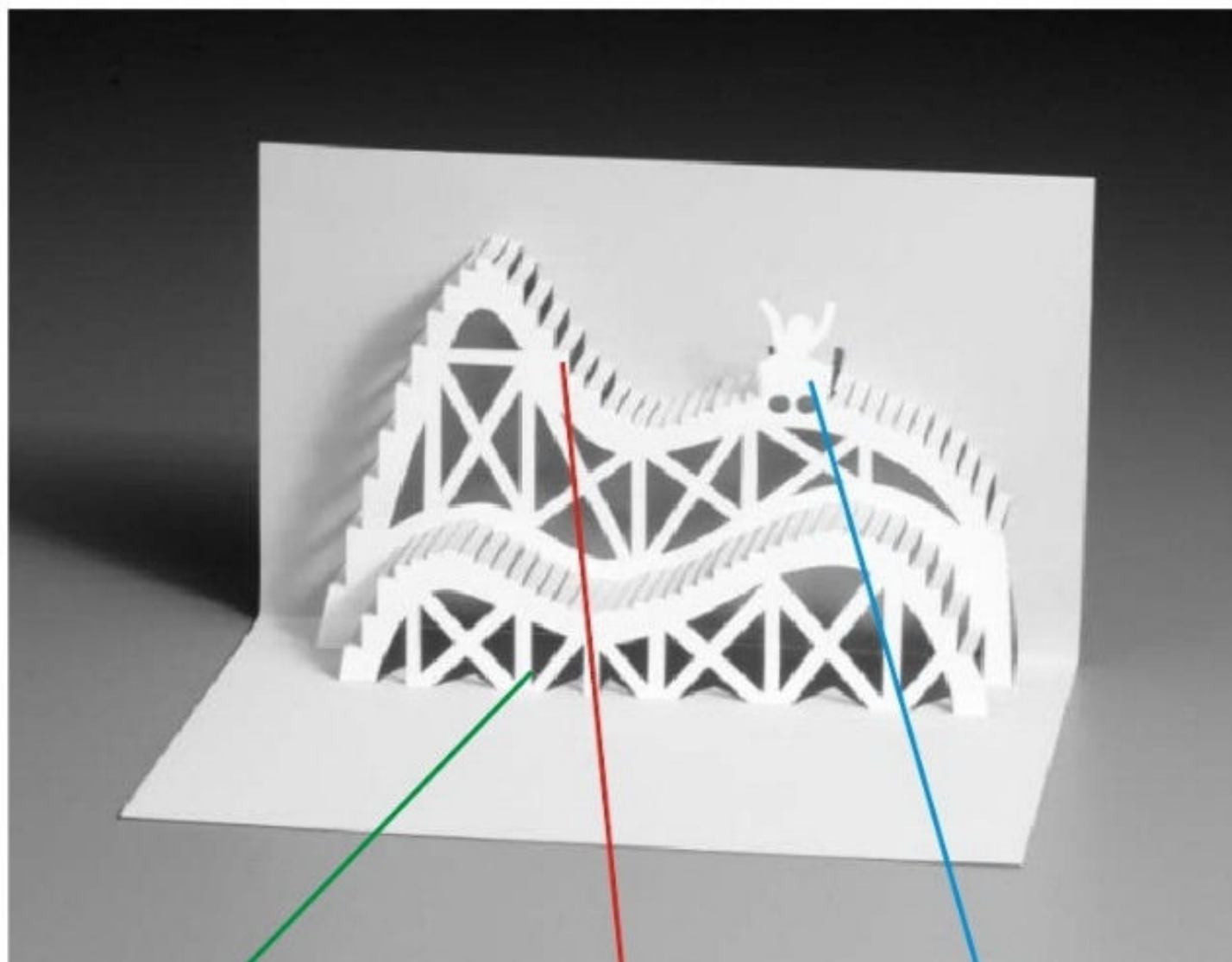


Roller Coaster

DIFFICULTY
LEVEL



tips&tricks

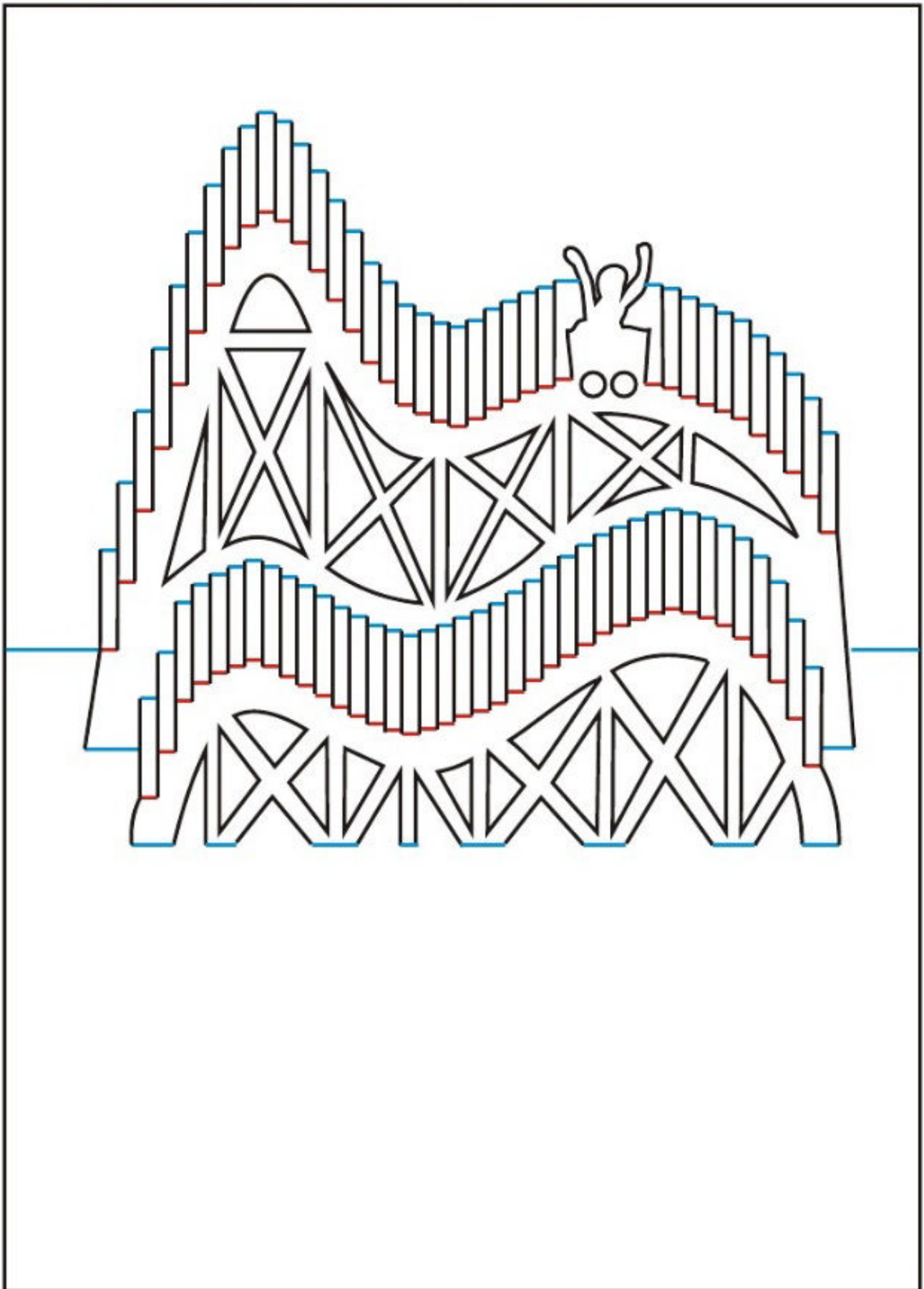


Latticework is like a meditation. Be persistent and you will get it done.

Make sure the rails are nice and parallel.

You can easily change the pattern to include two or three cars.

■ RED=cut halfway through ■ BLUE=score ■ BLACK=cut through

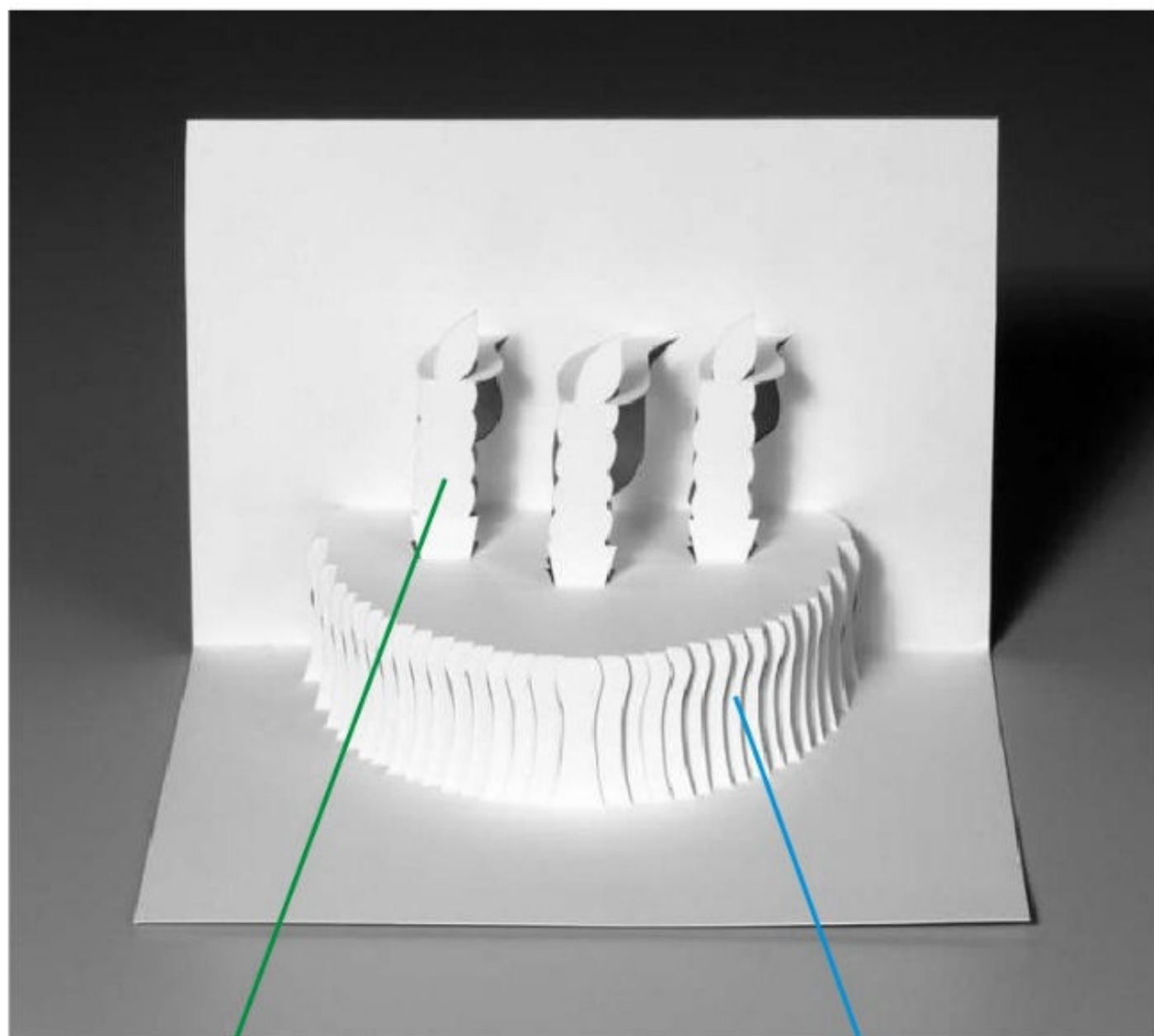


Birthday Cake

DIFFICULTY
LEVEL



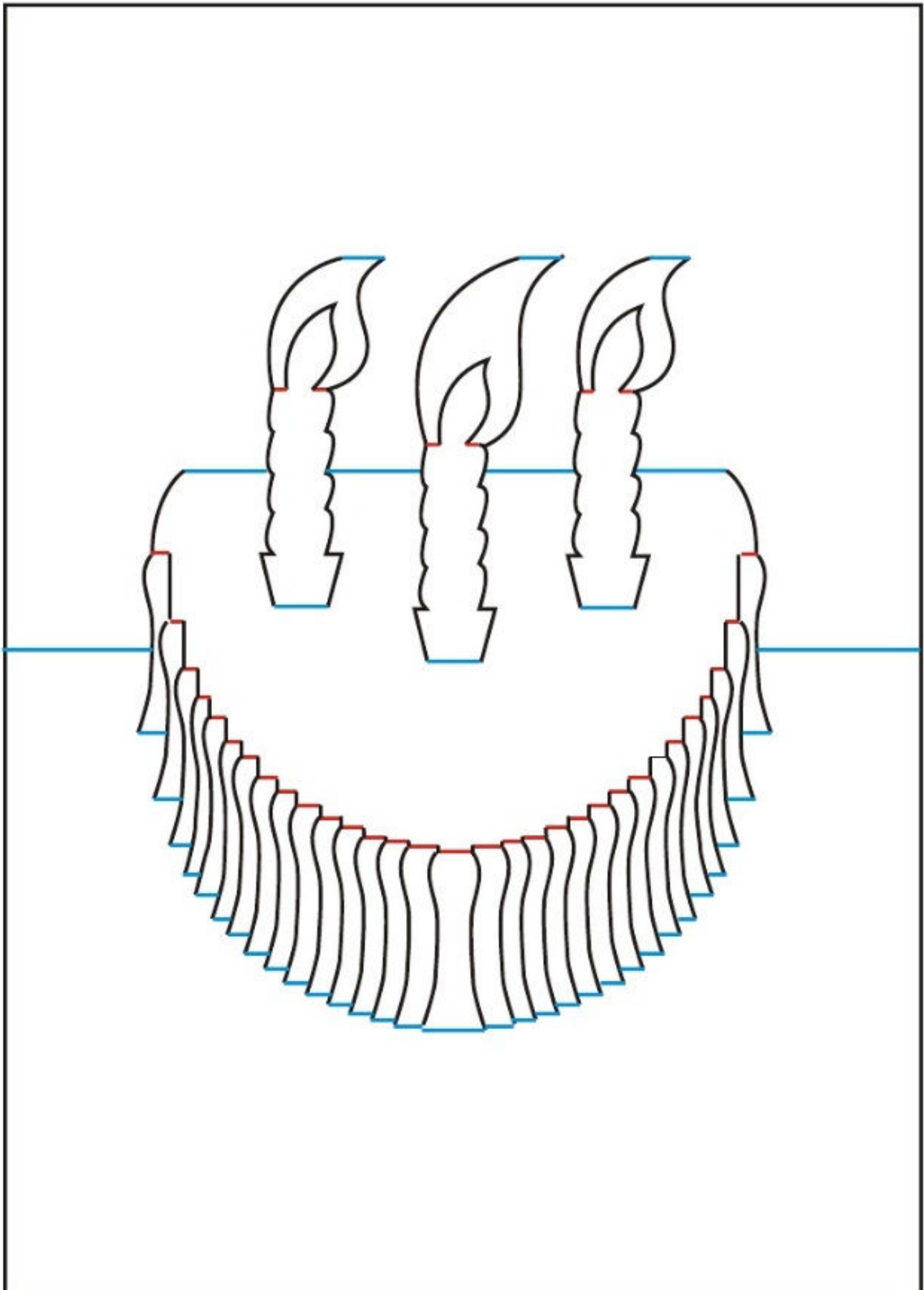
tips&tricks



Make sure to get the roundness of the twisty candles!

These ribs are very delicate. Cut them with a firm stroke and they will make a nice "cake shape".

■ RED=cut halfway through ■ BLUE=score ■ BLACK=cut through

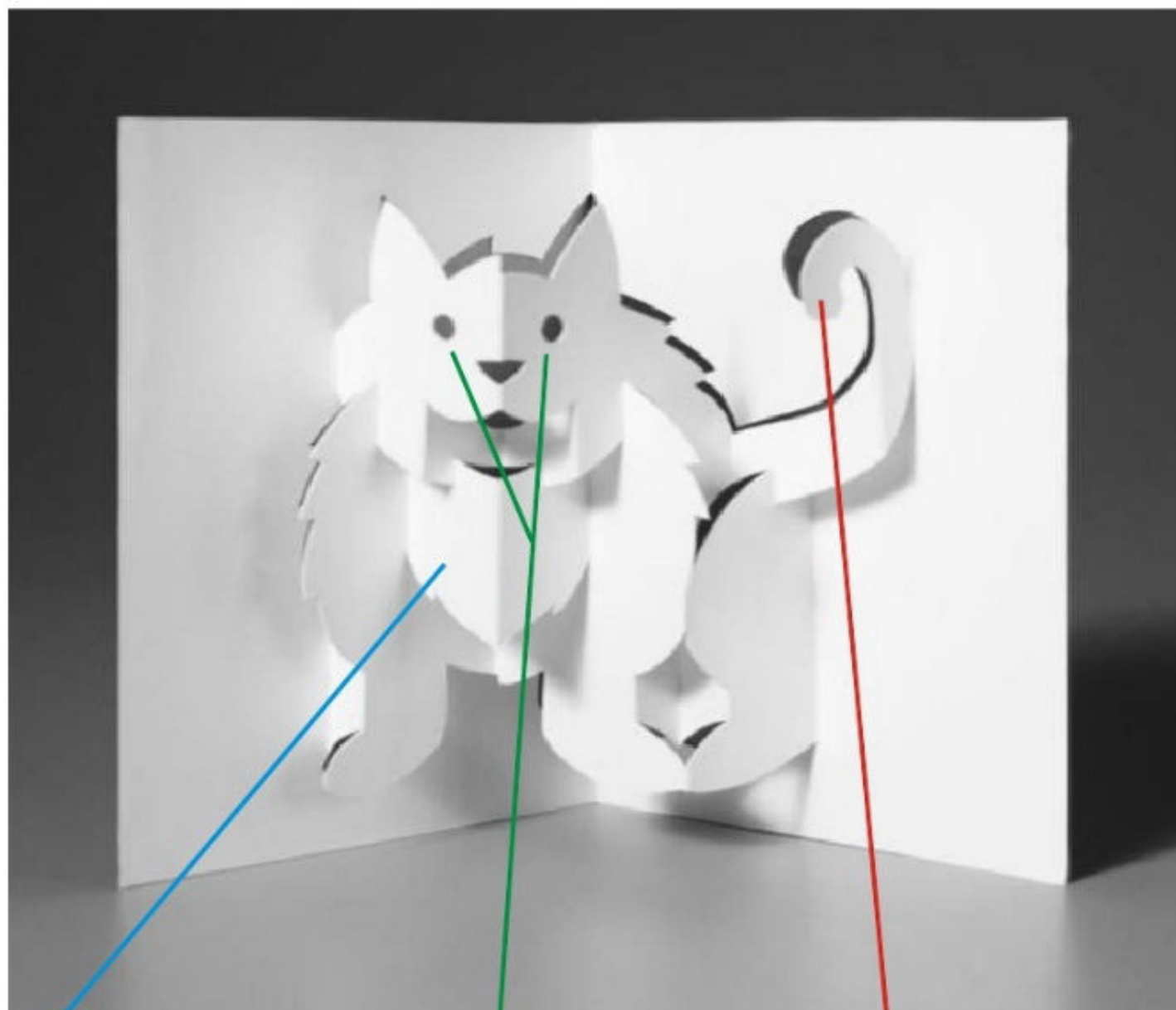


Kitty Cat

DIFFICULTY
LEVEL



tips&tricks

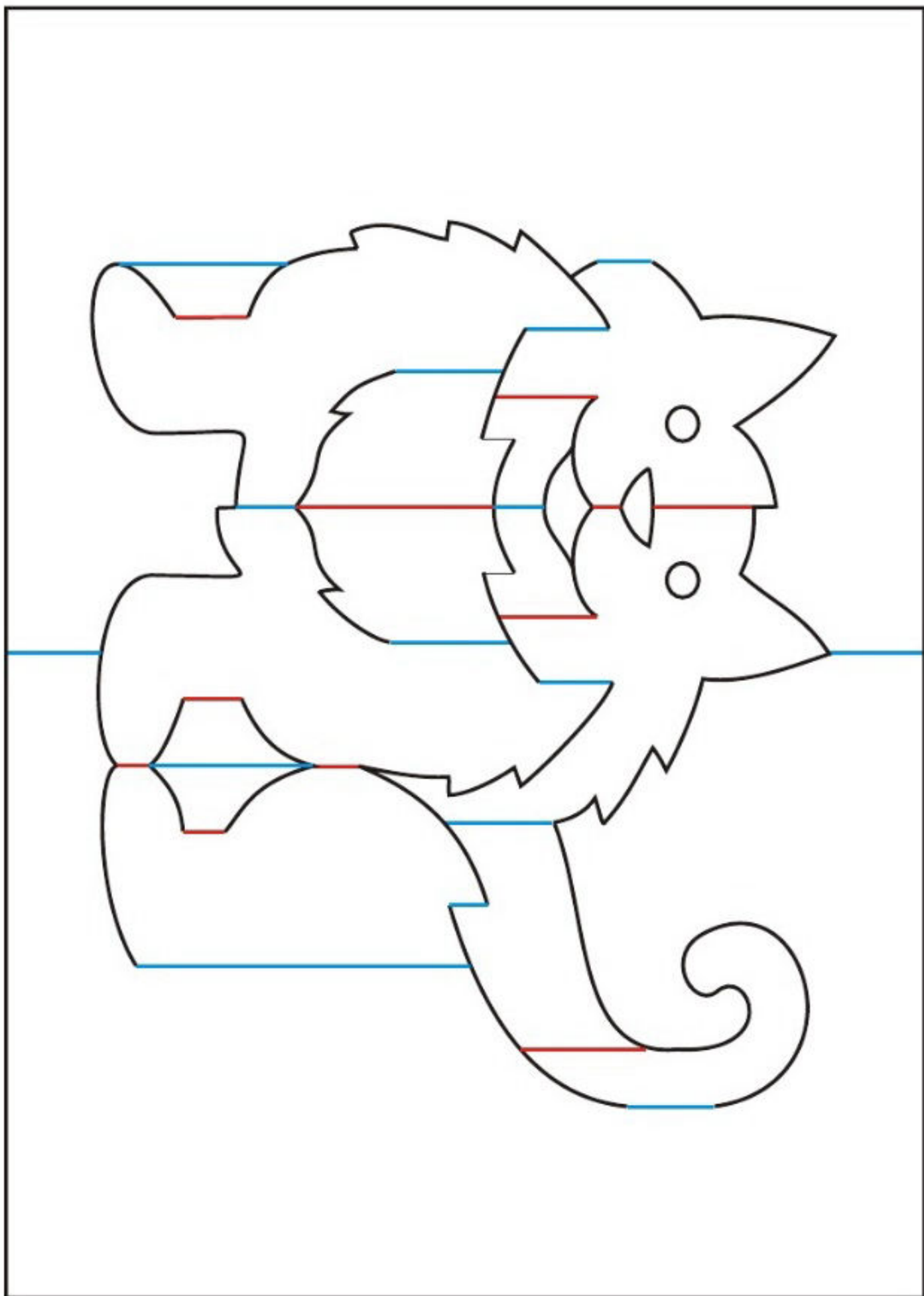


Have fun with the fur!
You can change the texture of the cat, making him fluffy or scraggly.

Use a punch for eyes to make them perfect!

Make sure the tail is perfectly curved. Make long, confident strokes with your knife.

■ RED=cut halfway through ■ BLUE=score ■ BLACK=cut through

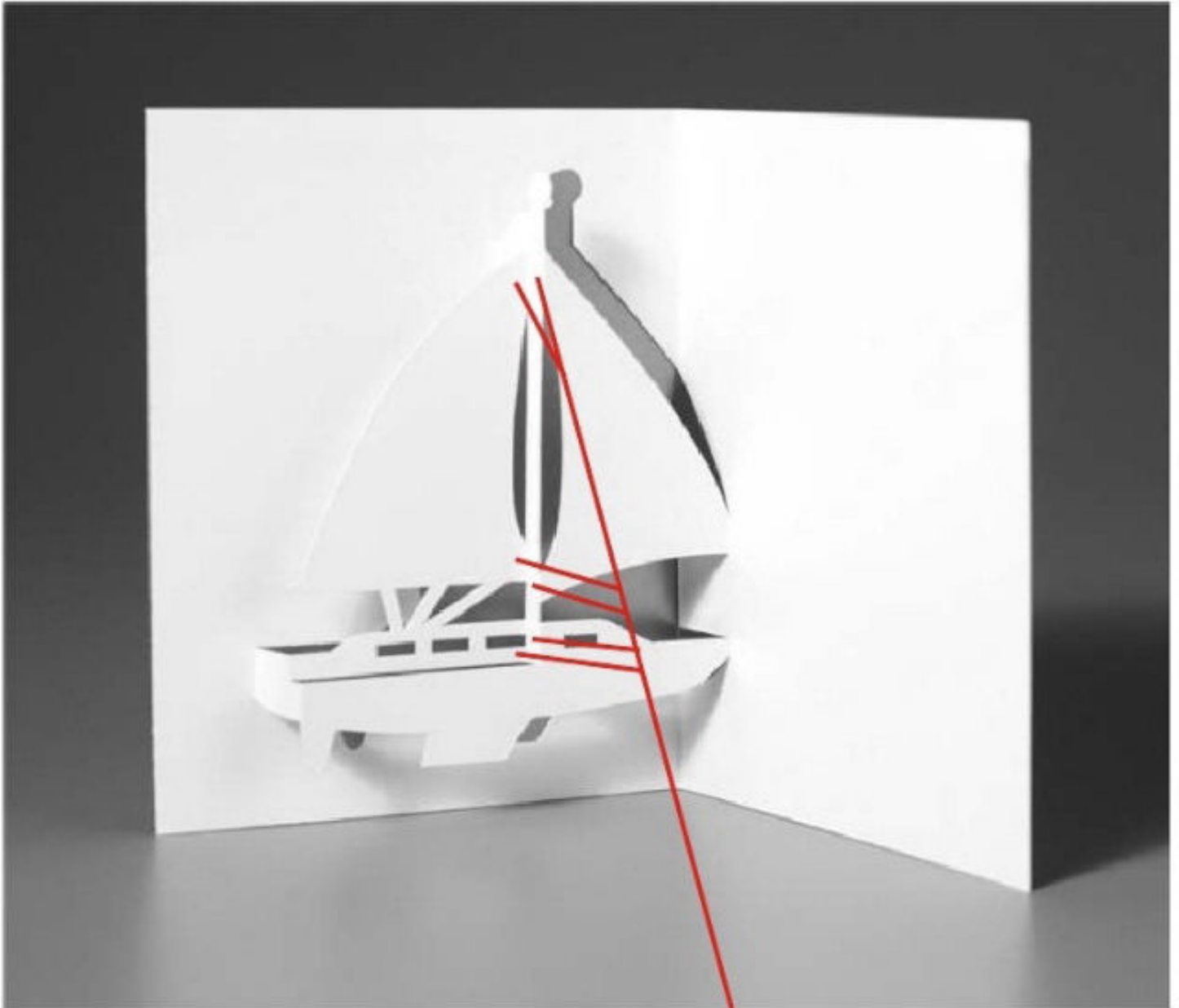


Sailboat

DIFFICULTY
LEVEL

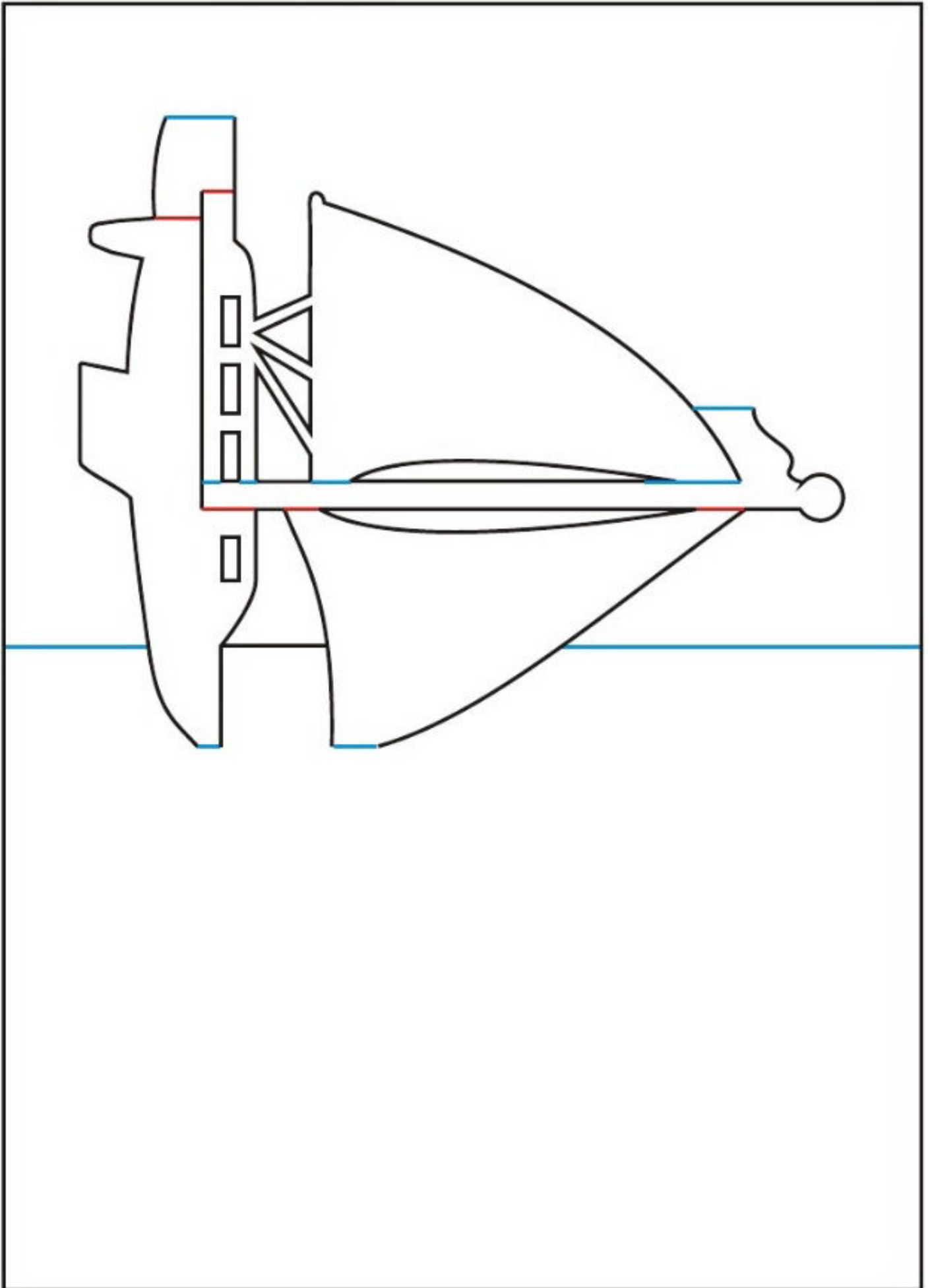


tips&tricks



These short folds
along the mast
will be tricky.
Go carefully.

■ RED=cut halfway through ■ BLUE=score ■ BLACK=cut through

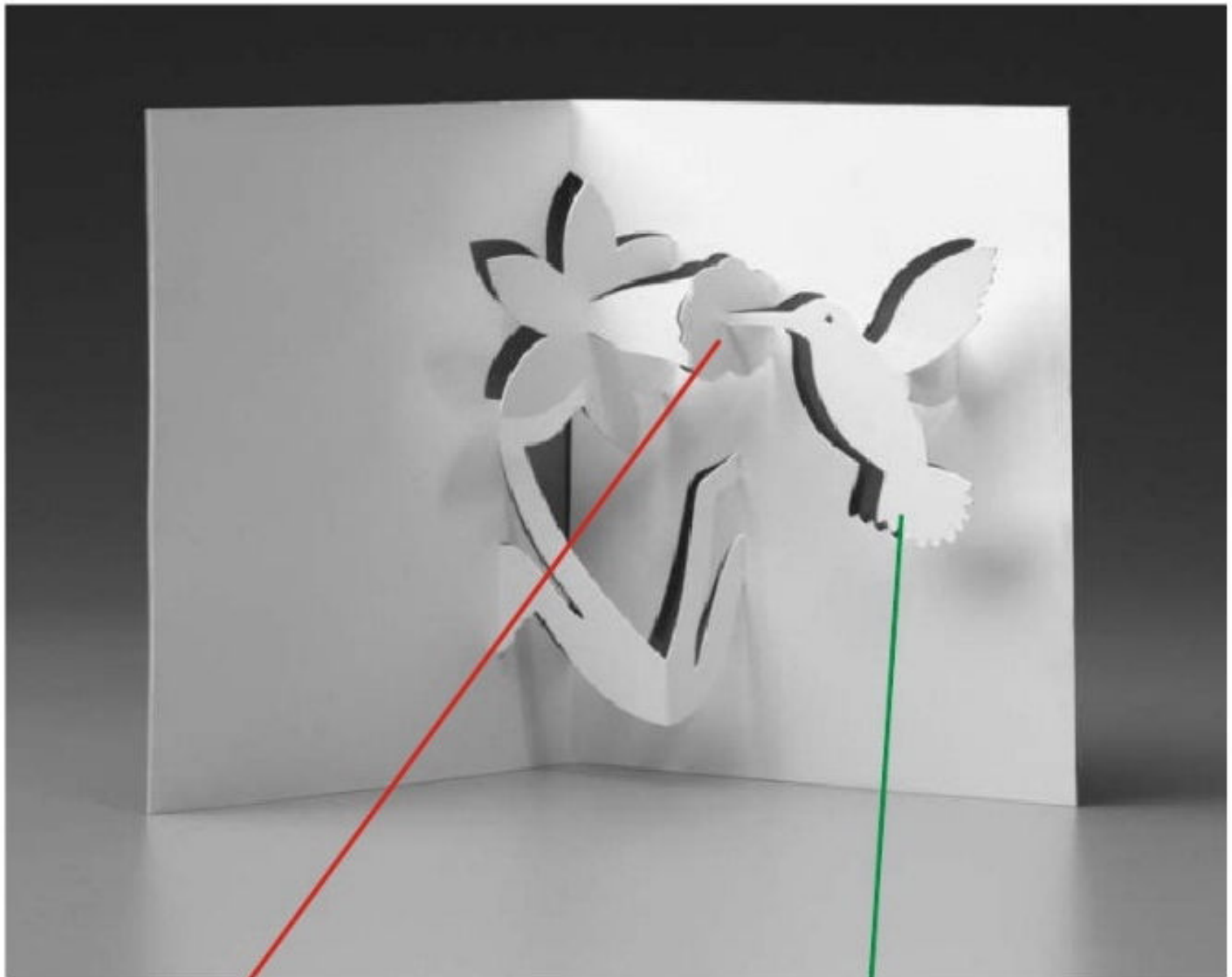


Hummingbird

DIFFICULTY
LEVEL



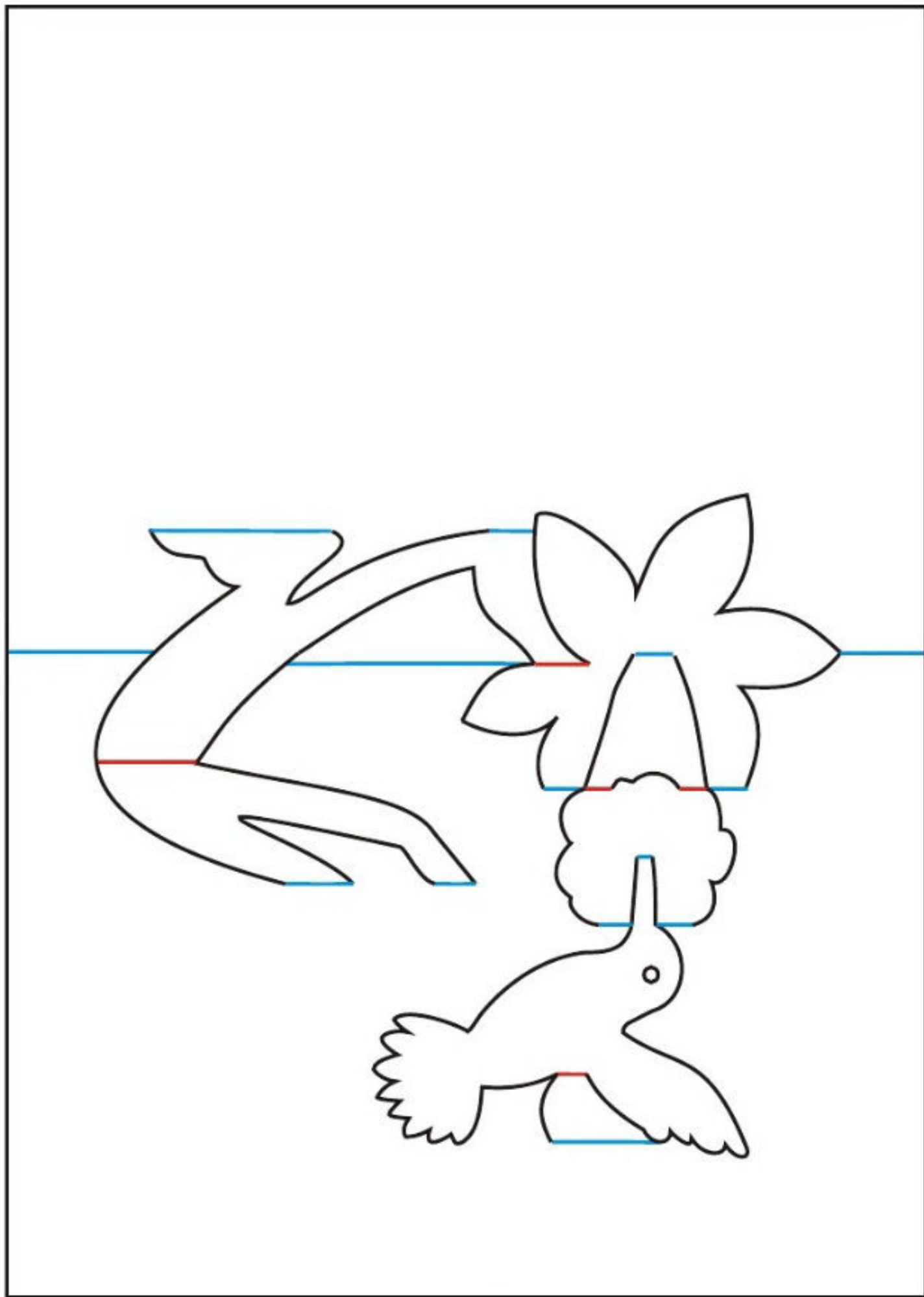
tips&tricks



Try to make the beak come to as sharp a point as possible, leaving enough paper to make the connection.

The back feathers can be made to look quite realistic.

■ RED=cut halfway through ■ BLUE=score ■ BLACK=cut through



Lighthouse

DIFFICULTY
LEVEL

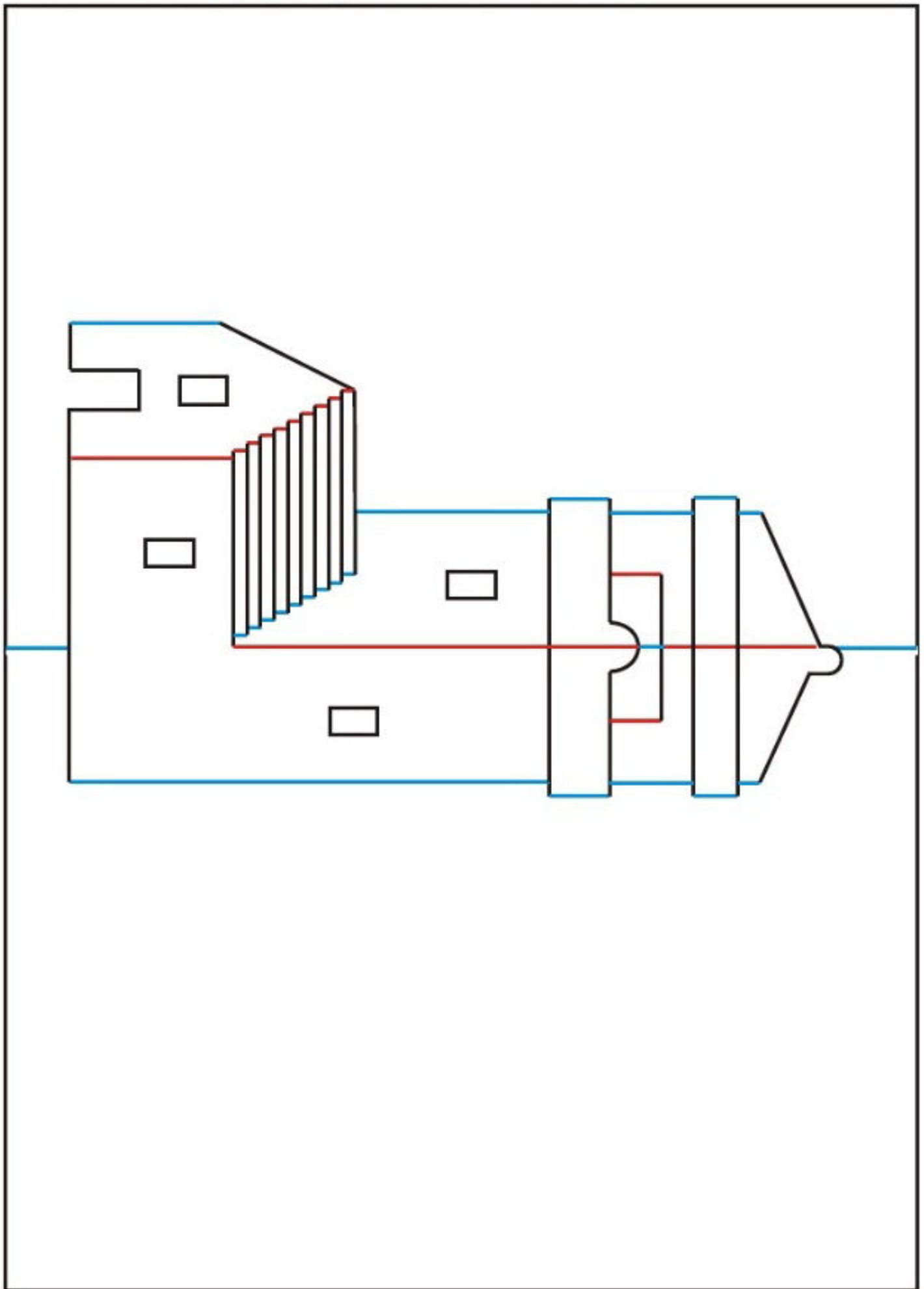


tips&tricks



This is a very simple lighthouse with plenty of room for drawing seagulls and beaches.

■ RED=cut halfway through ■ BLUE=score ■ BLACK=cut through

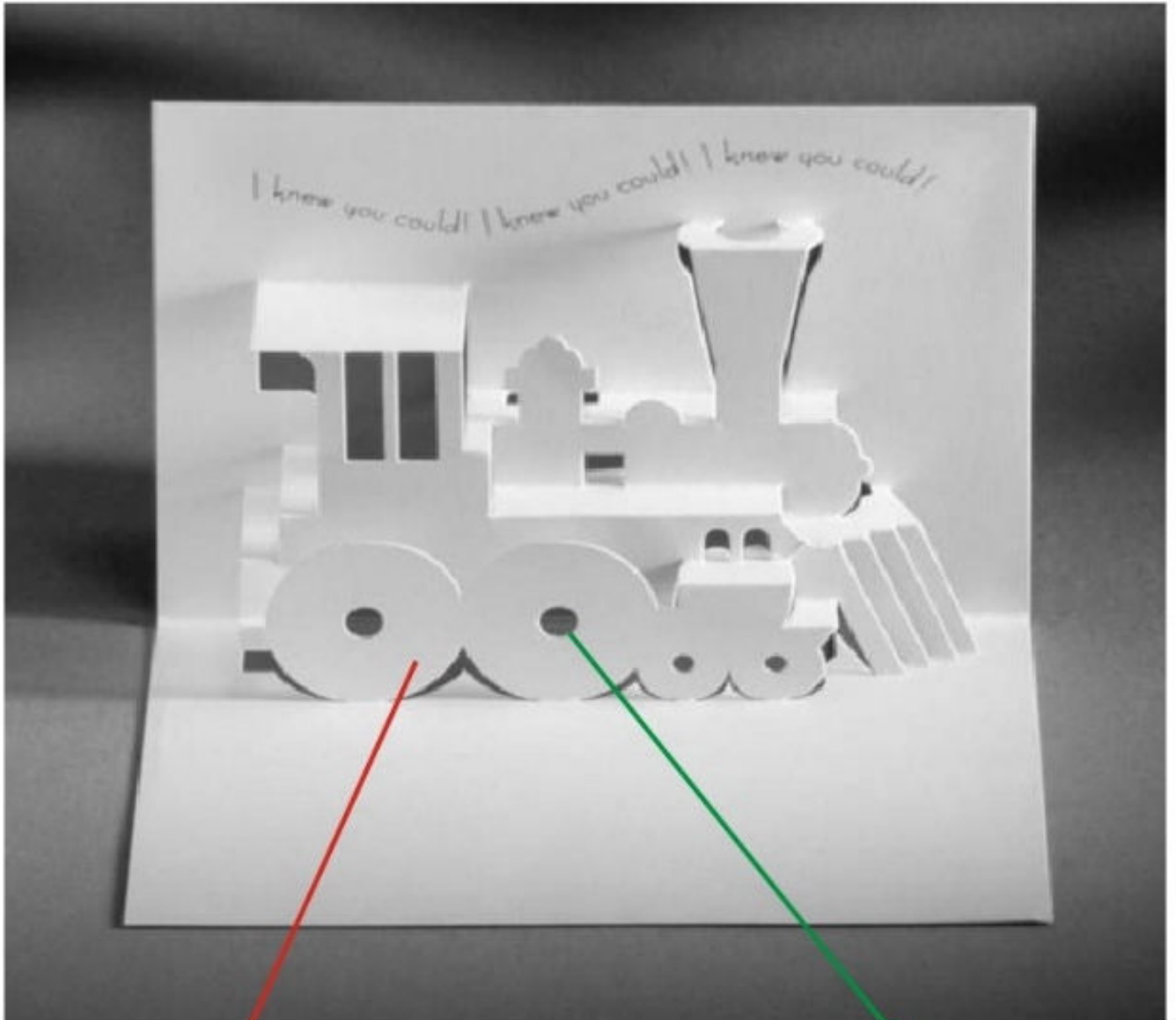


Train Engine

DIFFICULTY
LEVEL



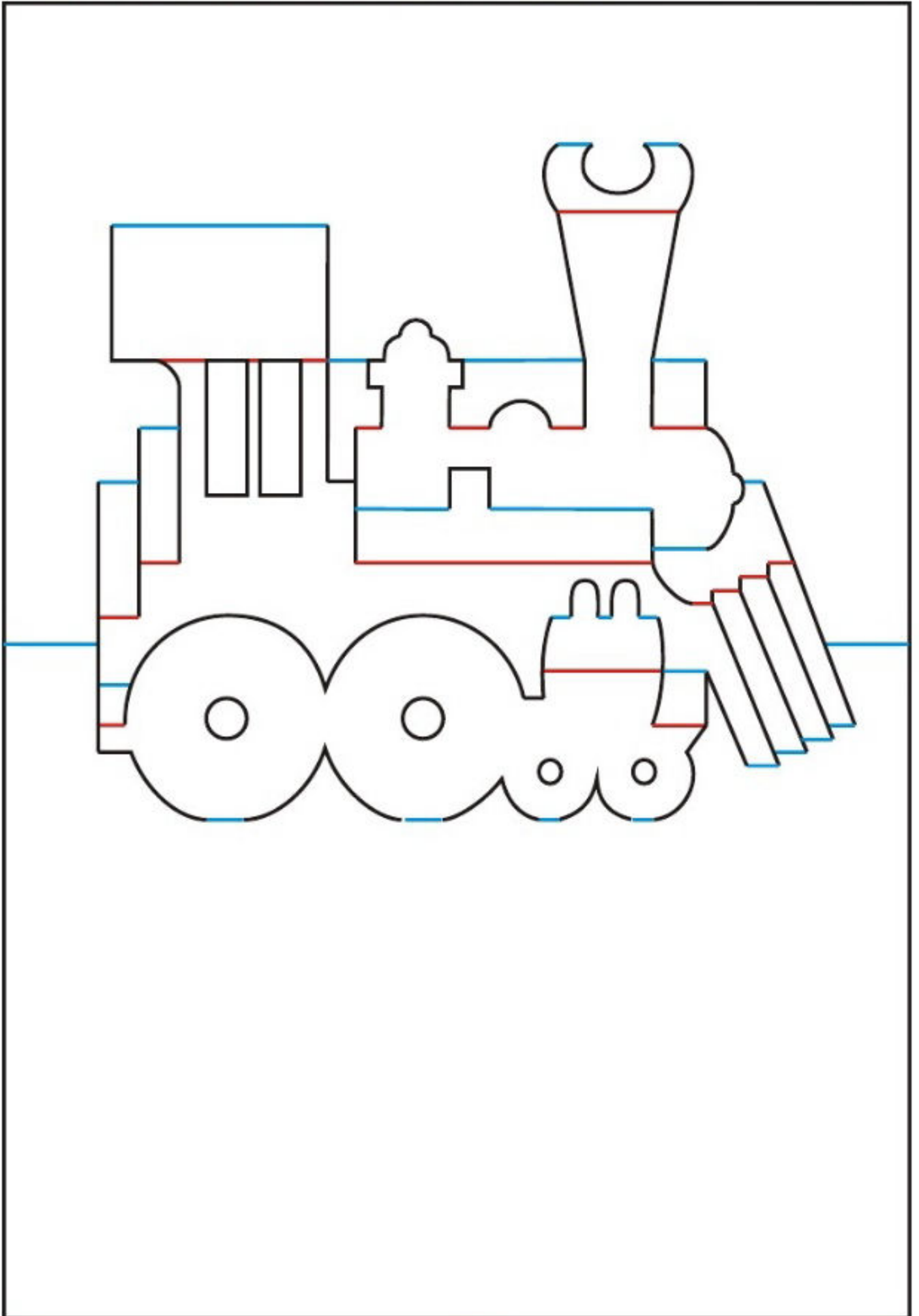
tips&tricks



Make these wheels nice and round.

Use a punch for the larger holes.

■ RED=cut halfway through ■ BLUE=score ■ BLACK=cut through

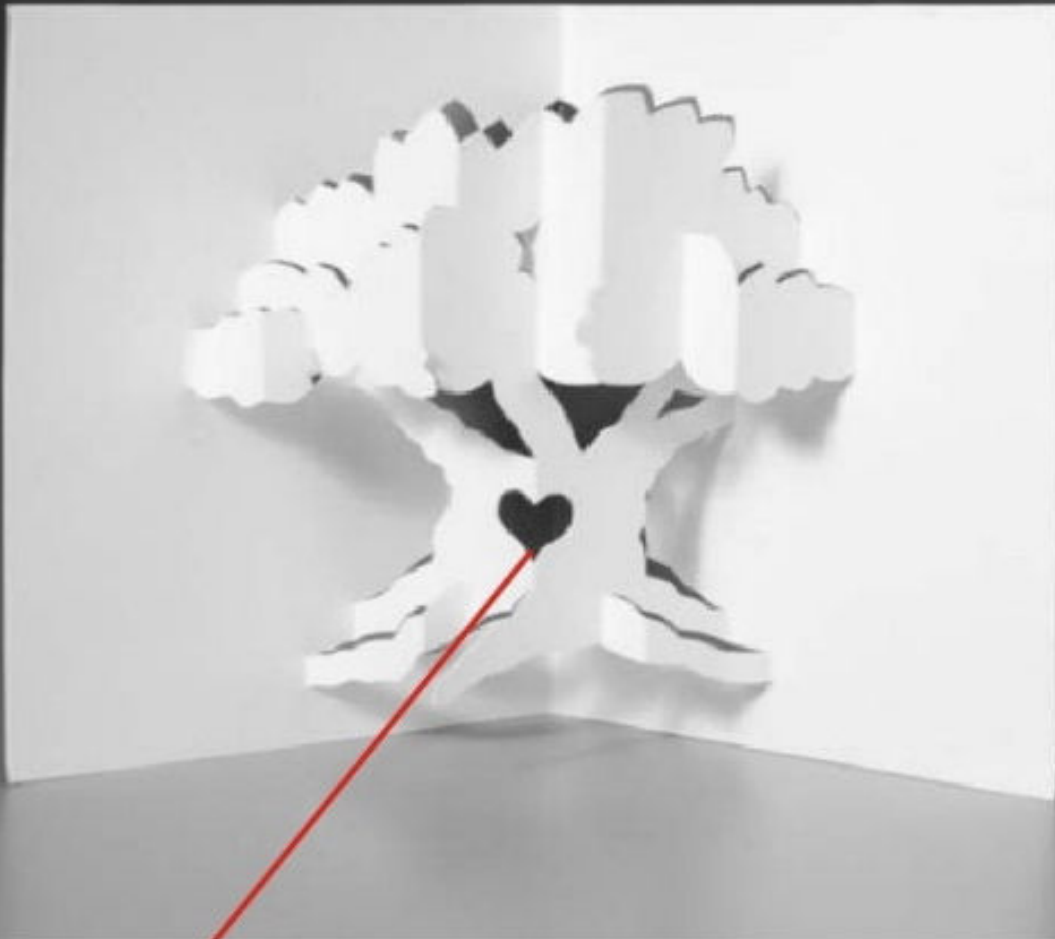


Tree of Love

DIFFICULTY
LEVEL



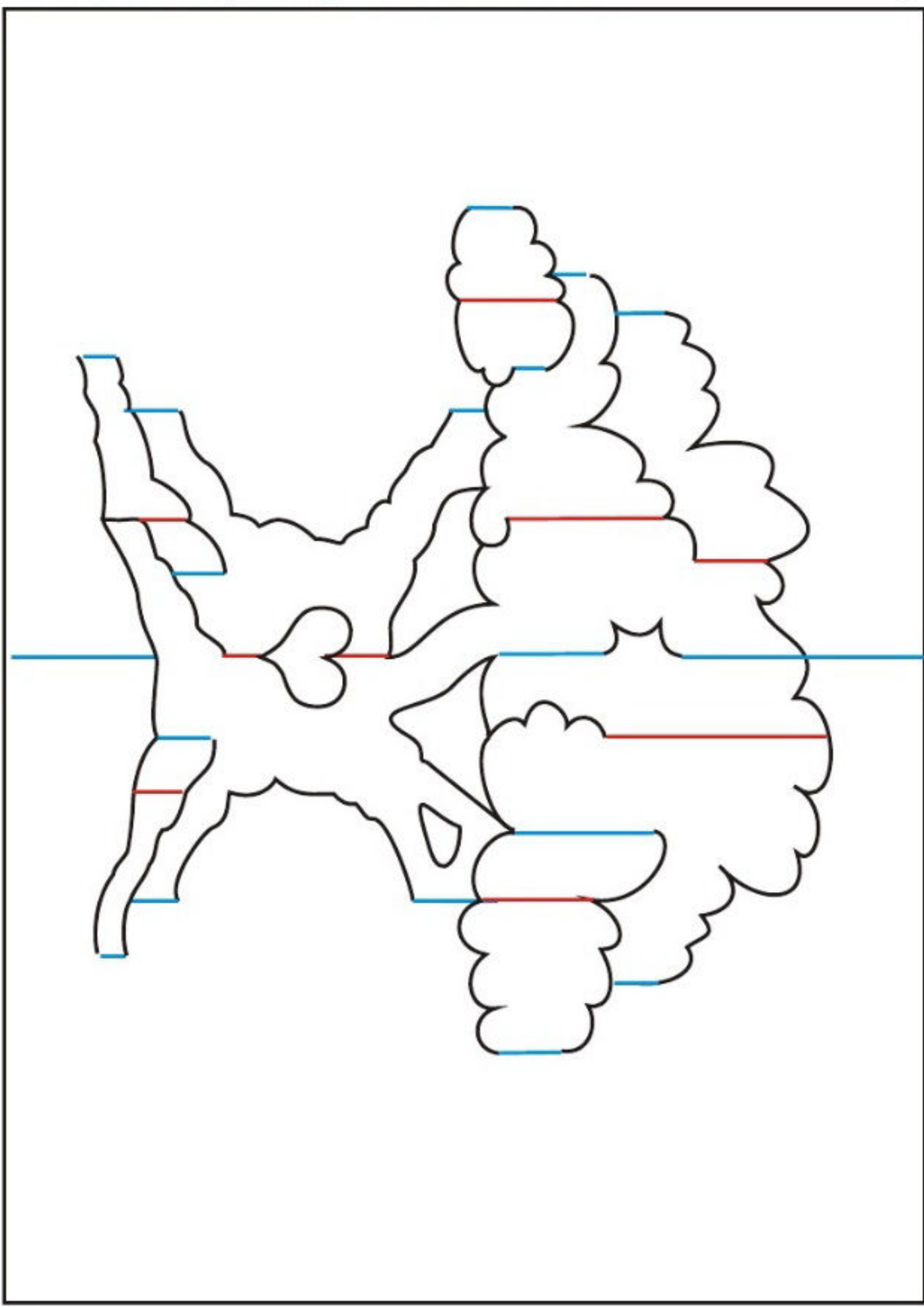
tips&tricks



Continuous fluid motion is required to make the tree look solid.

This is a fun one to color for Grandparents!

■ RED=cut halfway through ■ BLUE=score ■ BLACK=cut through



Final Word

Pop-ups are great for parties!

Here are some tips on making your own:



1. Start with simple shapes. All complex shapes are made up from multiple simple shapes.
2. Make many sketches of the card before you start to cut
3. Avoid having a “tab” simply come out from the card to hold up your figure. Much of the satisfaction of good design follows by having nothing inherently “mechanical” about the mechanism that pops the card up.
4. Make a prototype, then set it down overnight. Come back to your work fresh and imagine the corrections and changes in three dimensions.
5. Be persistent! Anything can be made to pop-up!
6. Use grid paper to make your final patterns.